



GAMMA RAY TEMPERATURE LOG

File No:	Company CANADIAN NATURAL RESOURCES LIMITED									
LSD. 02	Well		CNRL 32-07 CADOT 2-19-85-18							
SEC. 19	Field		PEACE RIVER							
TWP. 085	Province		ALBERTA		Country		CANADA			
RGE. 18	Surface Location 6-19-85-18W5				License 0330080		Other Services:			
WEST 5	LSD. 02 SEC. 19 TWP. 085 RGE 18 W. 5									
Permanent Datum	GROUND LEVEL		Elevation		615.9		Elev K.B. 625.2			
Log Meas. From	KELLY BUSHING		M. Above Datum		9.3		Elev D.F.			
Drilling Meas. From	KELLY BUSHING						Elev G.L. 615.9			
Date	JANUARY 4, 2018		Perforations							
Run No	1		Density		Shots		From		To	
Type Log	CCL/GR/TEMP									
Depth Driller (OH)	1343.0									
Depth Driller (CH)	1343.0									
Depth Logged (PBDT)	1333.0									
Bottom Log Interval	1333.0									
Top Log Interval	SURFACE									
Fluid Type	H2O									
Fluid Level	N/A									
Wellhead Pressure (KPa)	VAC									
Max. Temp. (°C)	180°C		Carrier Size		mm		Carrier Type			
Truck # / Location	207/ RED DEER		Charge Size		gr		Charge Type			
Recorded By	TYLER SALMON		Penetration		mm		Entry Hole		mm	
Witnessed By	DONOVAN		Phasing							
Casing Record	Size (mm)		Weight (Kg/m)		Top		Bottom			
CONDUCTOR	406.0		N/A		SURFACE		28.66			
INTERMEDIATE	177.8		N/A		SURFACE		855.37			
PERFORATED LINER	114.3		N/A		855.37		1343.0			

	Size (mm)	Type	Model	Depth
Bridge Plug				
Cement Retainer				
Packer				
Invoice #	4054			
Reference Literature	NO REFERENCE LITERATURE. LOG REFERENCED TO KB.			
Remarks: LOGGED AS PER CUSTOMER REQUEST				
REPEAT DONE AT 100-50mKB DUE TO DEVIATION ON BOTTOM				
All interpretations are opinions based on inferences from electrical or other measurements and we cannot, and do not guarantee the accuracy or correctness of any interpretations, and we shall not, except in the case of gross or willful negligence on our part, be liable or responsible for any loss, costs, damages or expenses incurred or sustained by anyone resulting from any interpretation made by any of our officers, agents, or employees. These interpretations are also subject to our general terms and conditions as set out in our current price schedule.				

Tool String Configuration

Max. Length: 2.42 m

Cable Head

-0.65 m Top of String

Length: 0.40 m Max Diameter: 36.51 mm

Lee Specialties Telemetry

Length: 1.51 m Max Diameter: 34.93 mm

0.00 m - CCL

0.95 m - Gamma Ray

1.57 m - Temperature Probe

1.77 m Bottom of String

Lee Specialties Temperature

Length: 0.51 m Max Diameter: 34.93 mm

MAIN PASS 1:1200

2017-01-04 17:40

CCL

0.00 100.00

Gamma Ray

0.00 150.00

Pass No. 6

METERS
1:1200

6.97

Temperature (°C)

0.00

200.00

Diff Temp (°C/m)

-5.00

5.00

Logging Up
Shutin

File MAIN 1200.pre

Rev. 2017.01.24

CCL →

Gamma Ray

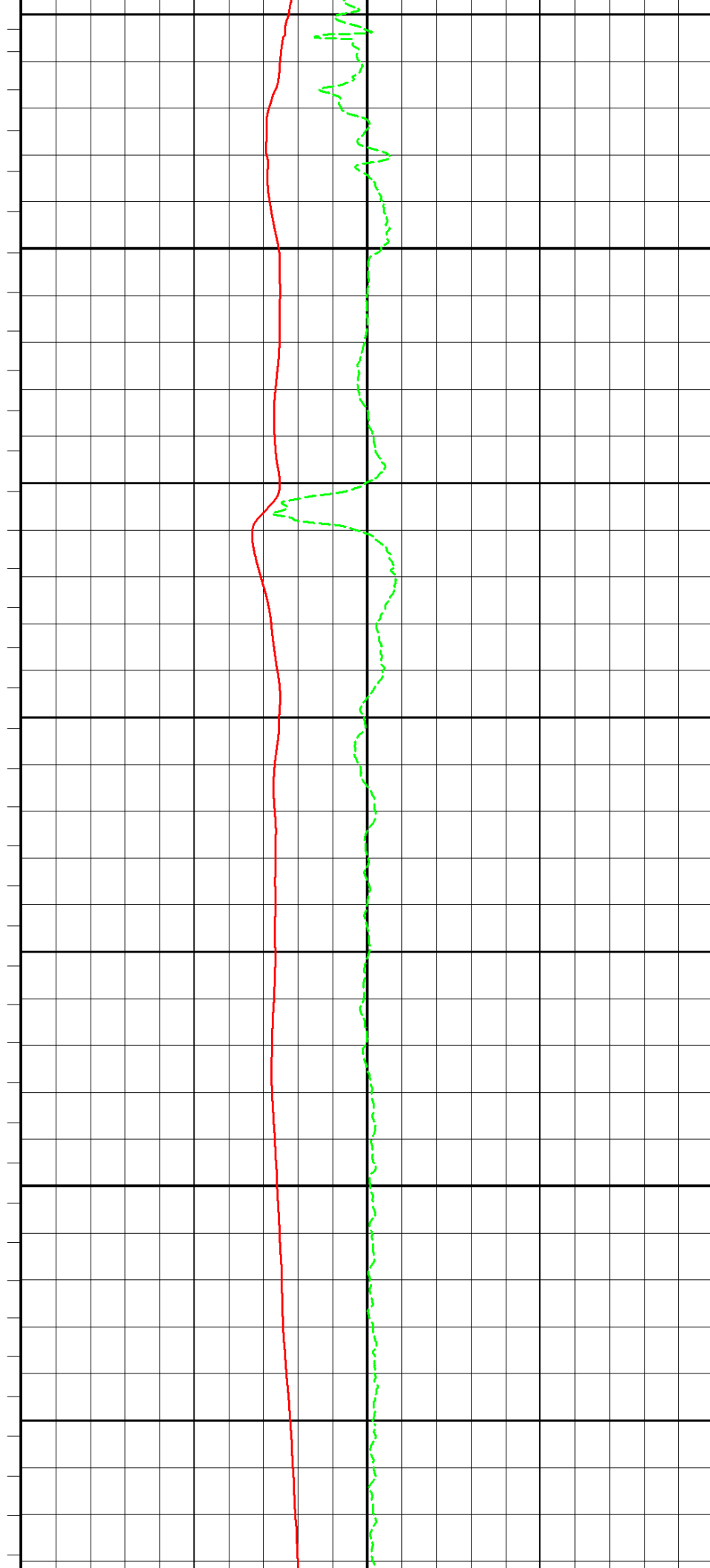
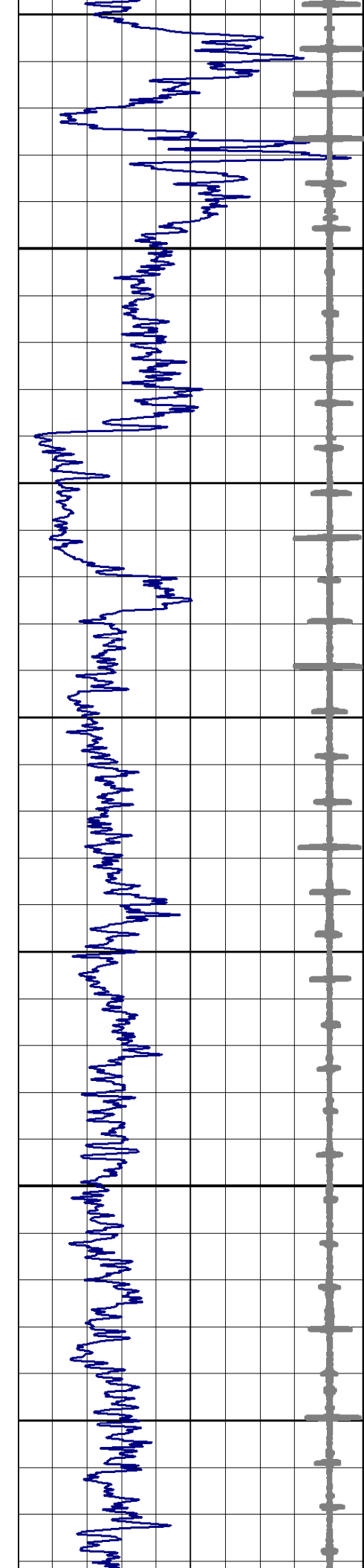
<Surface Casing Shoe>

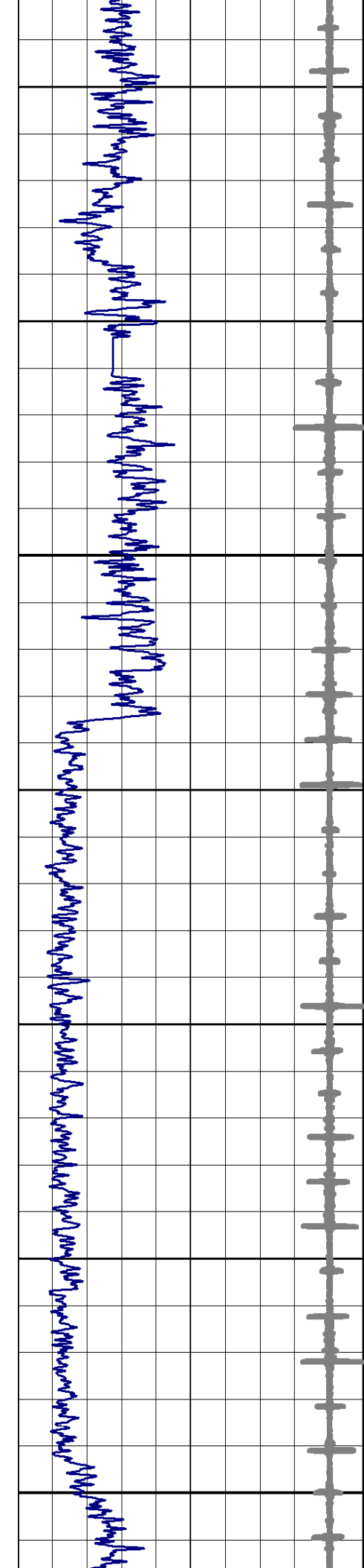
← TEMP

← DFTMP

200

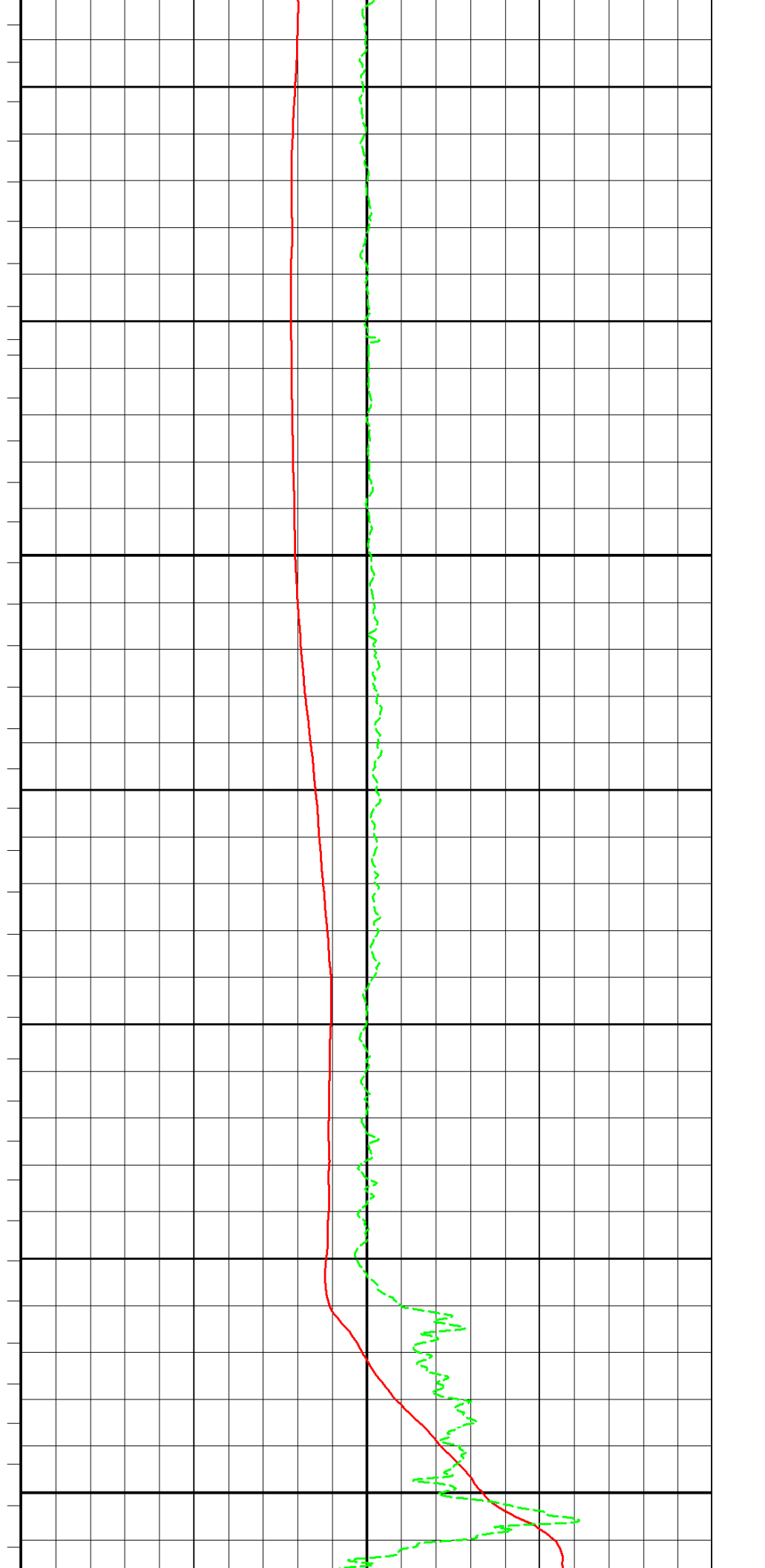
400



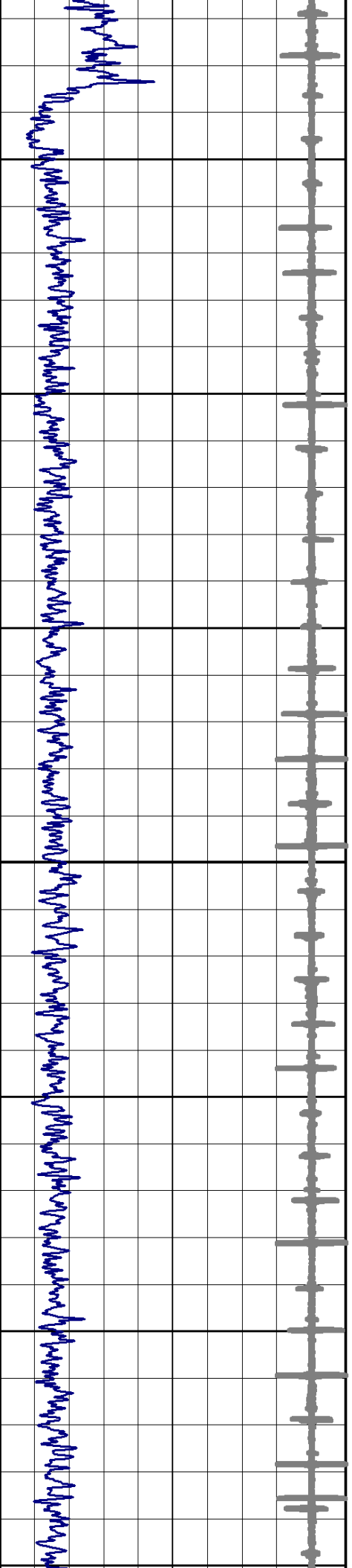
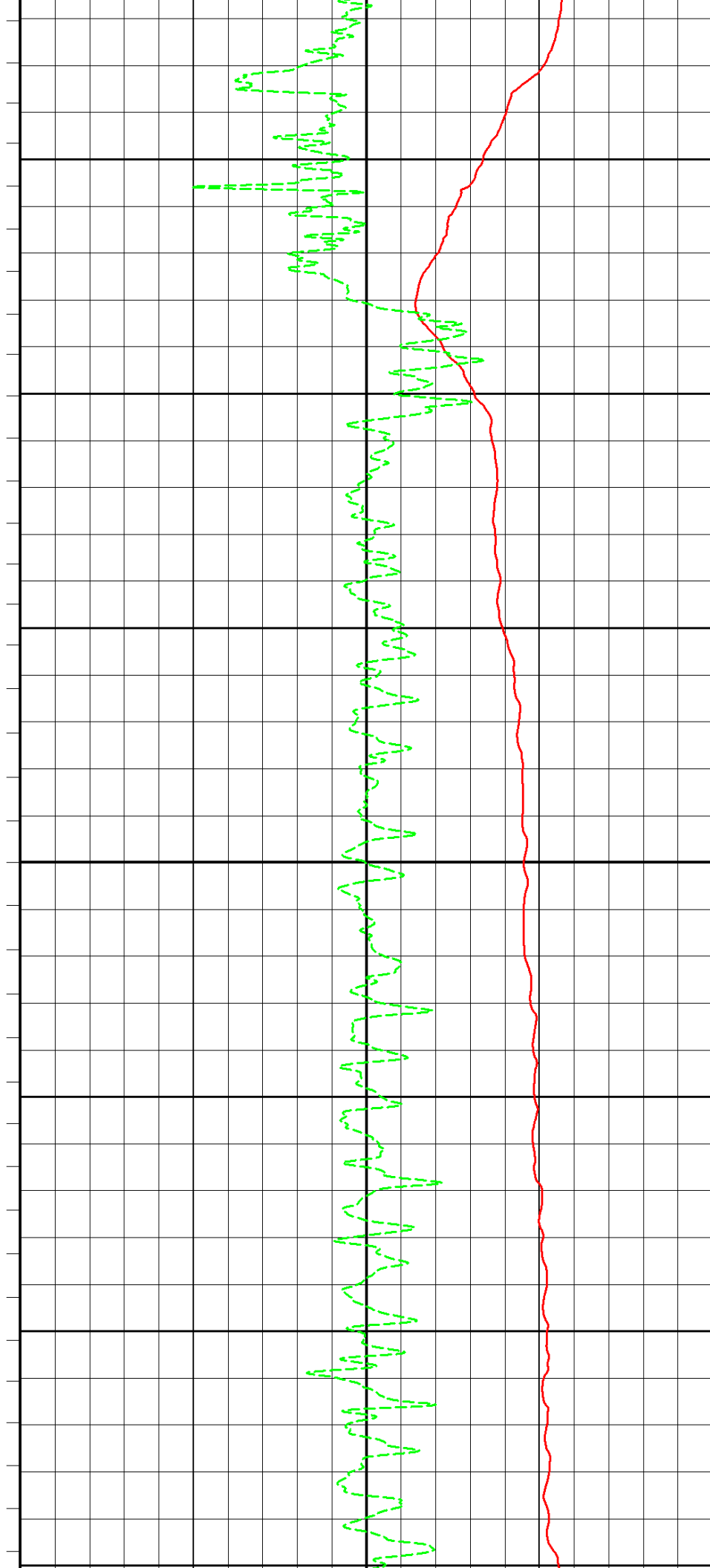


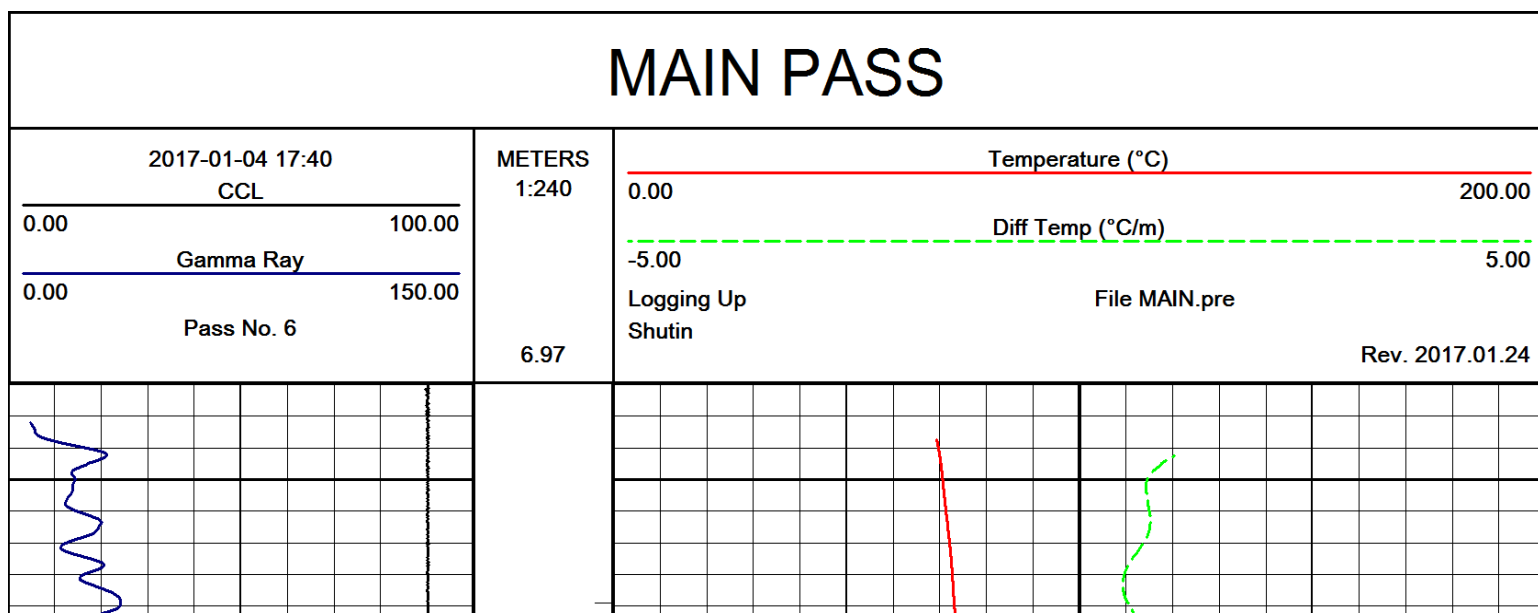
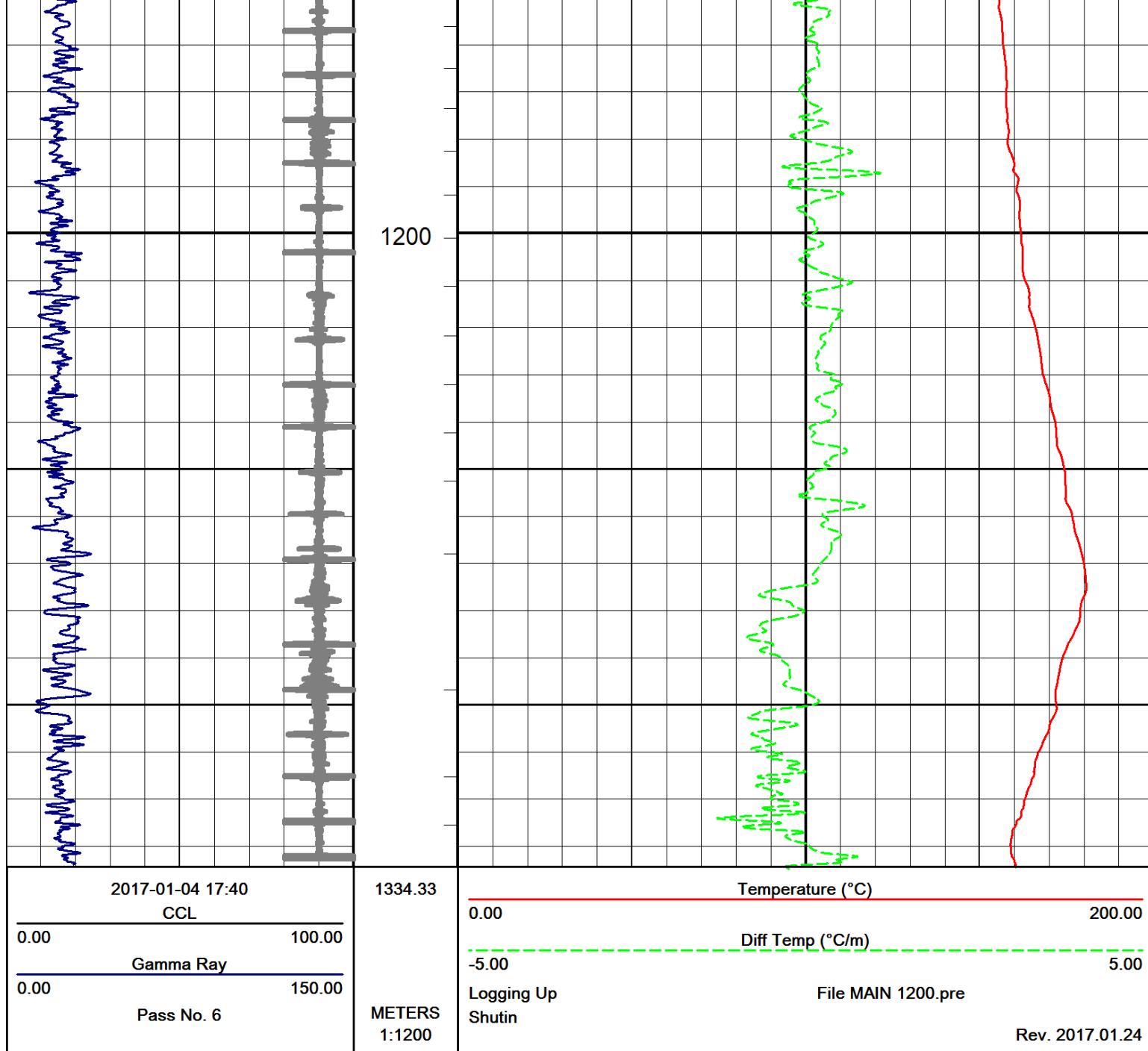
600

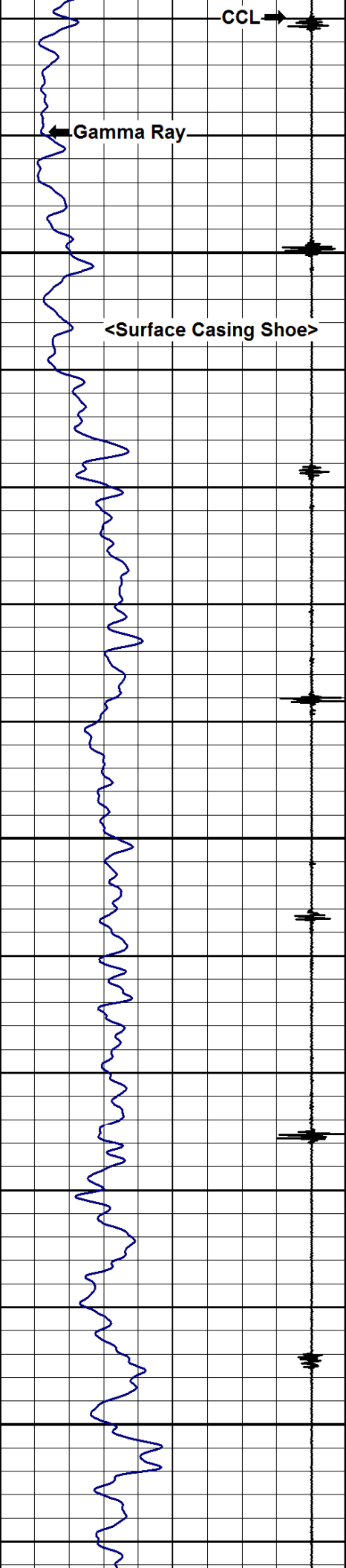
800



1000



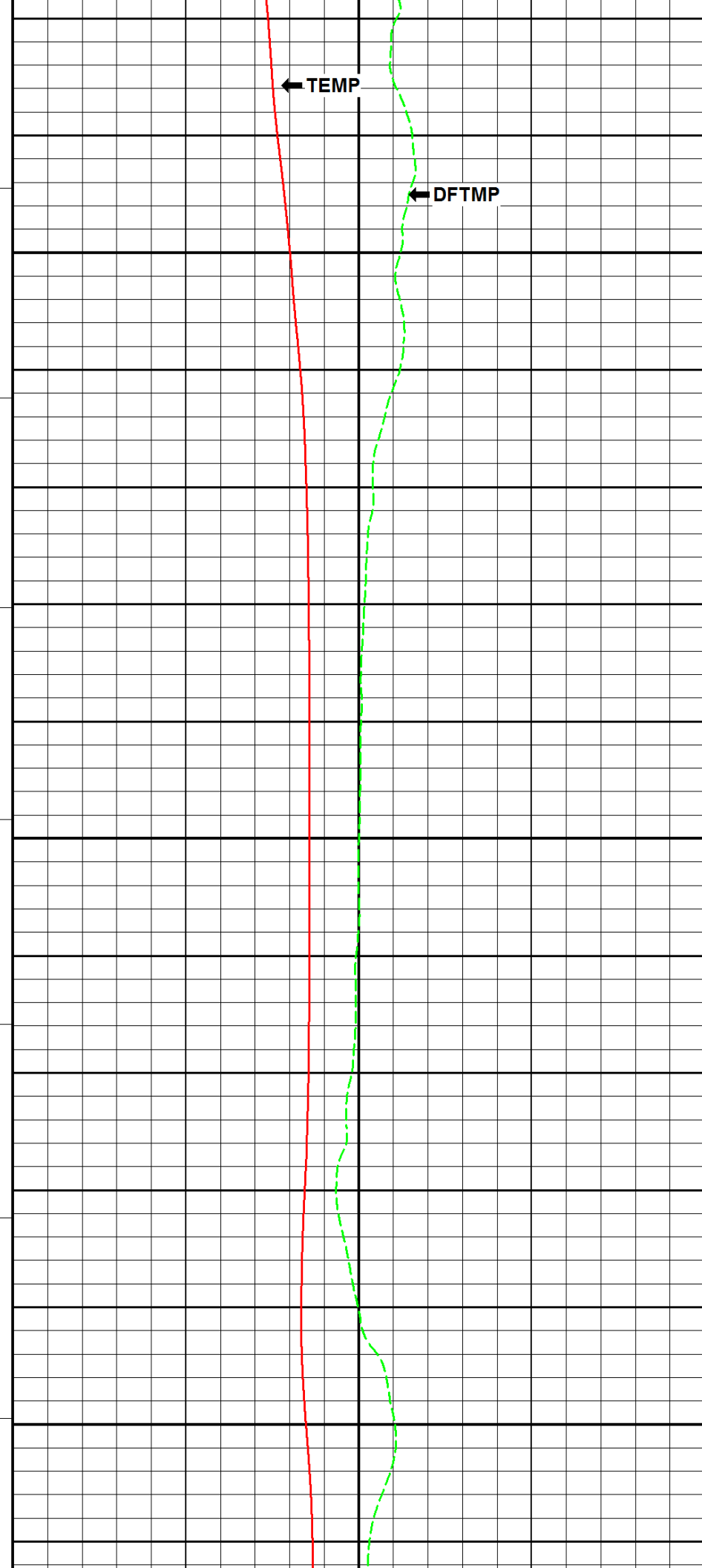


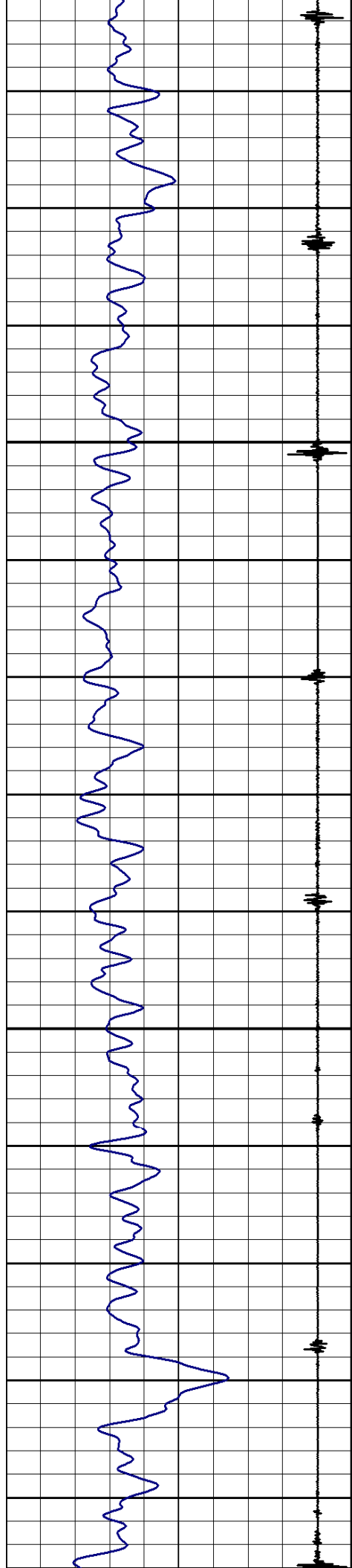


25

50

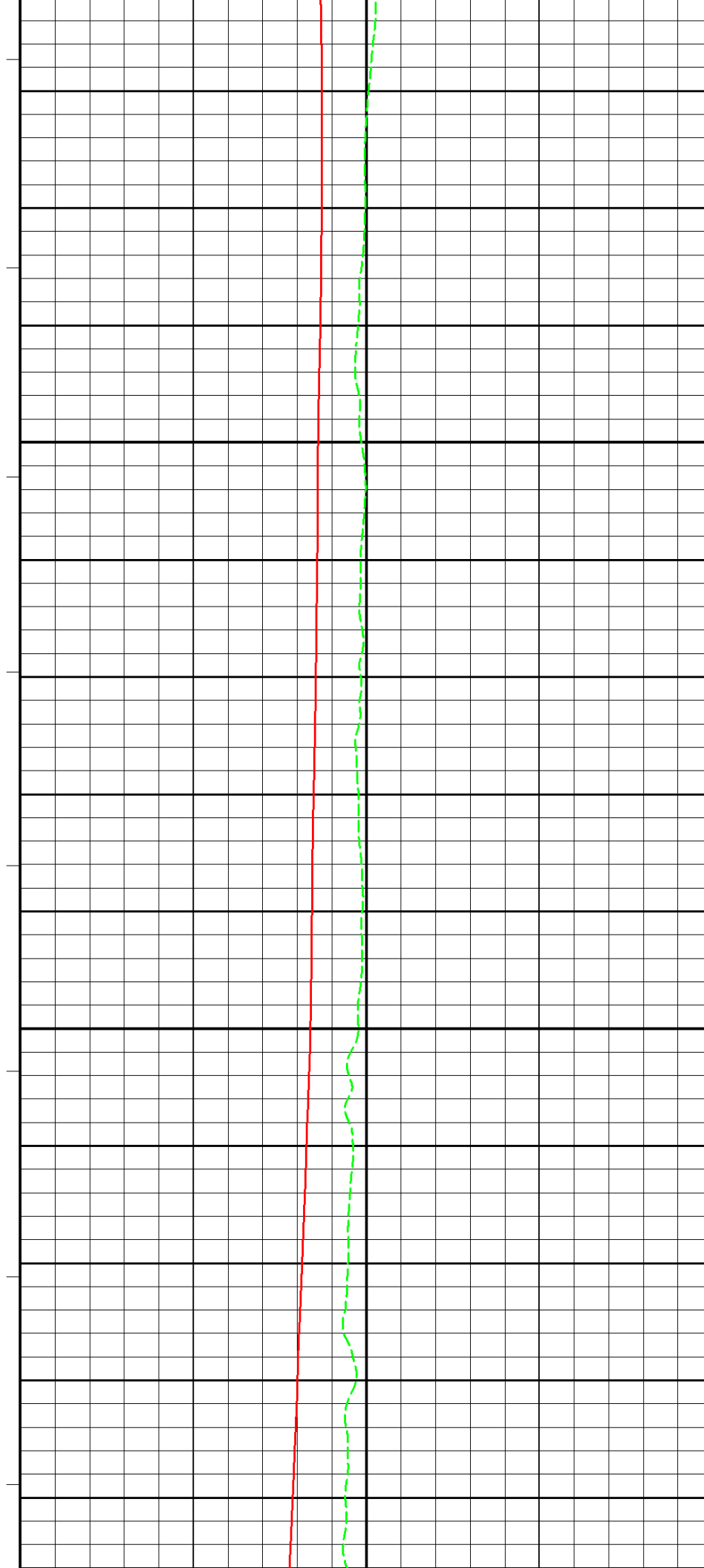
75

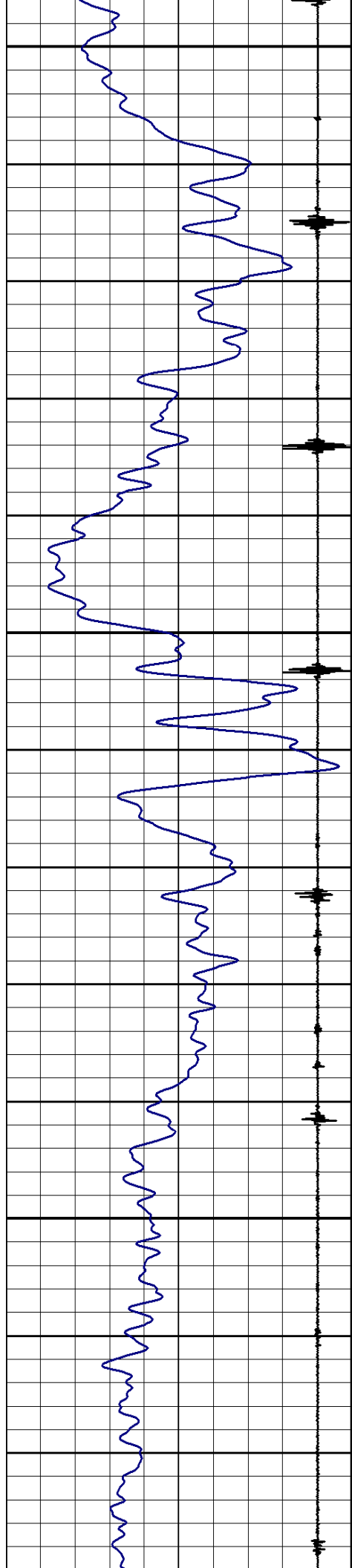




100

125

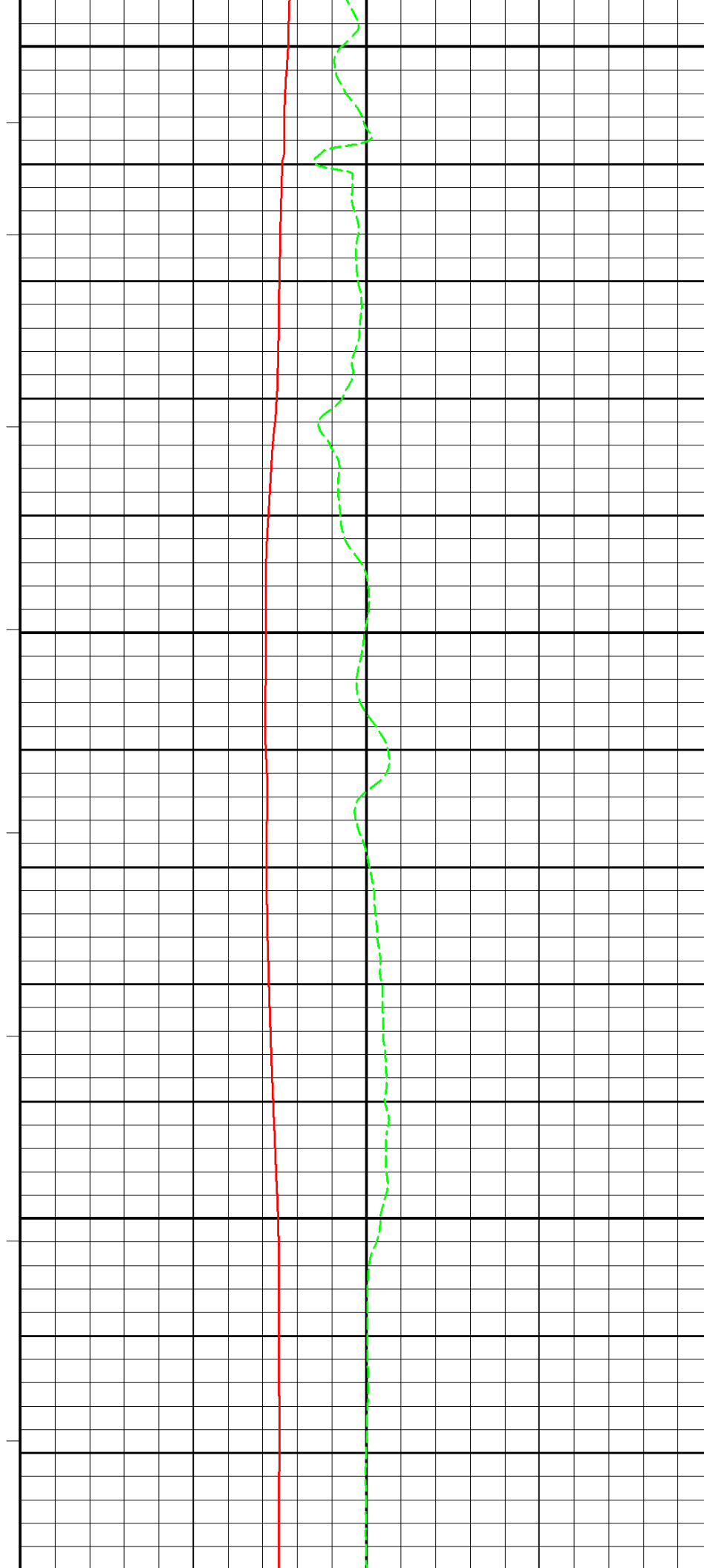


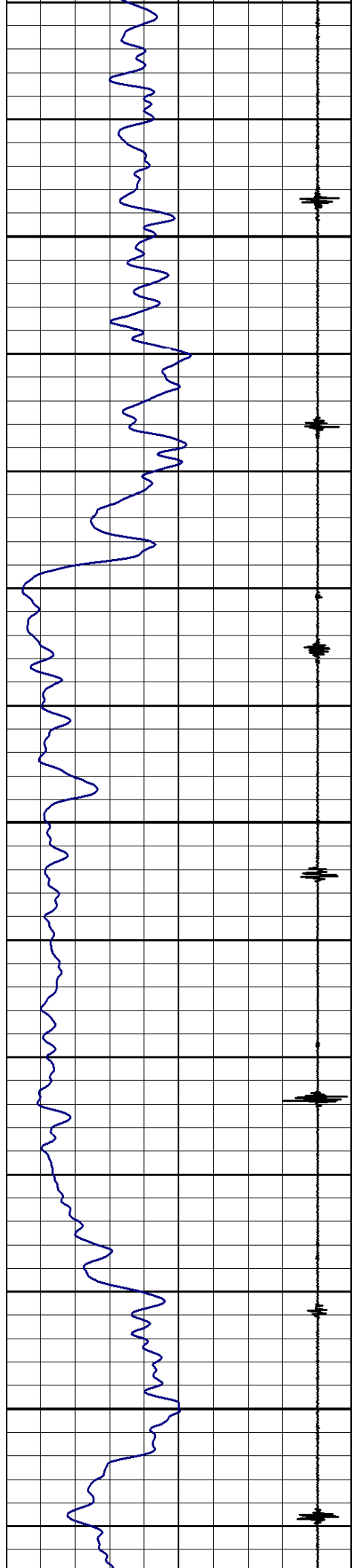


150

175

200

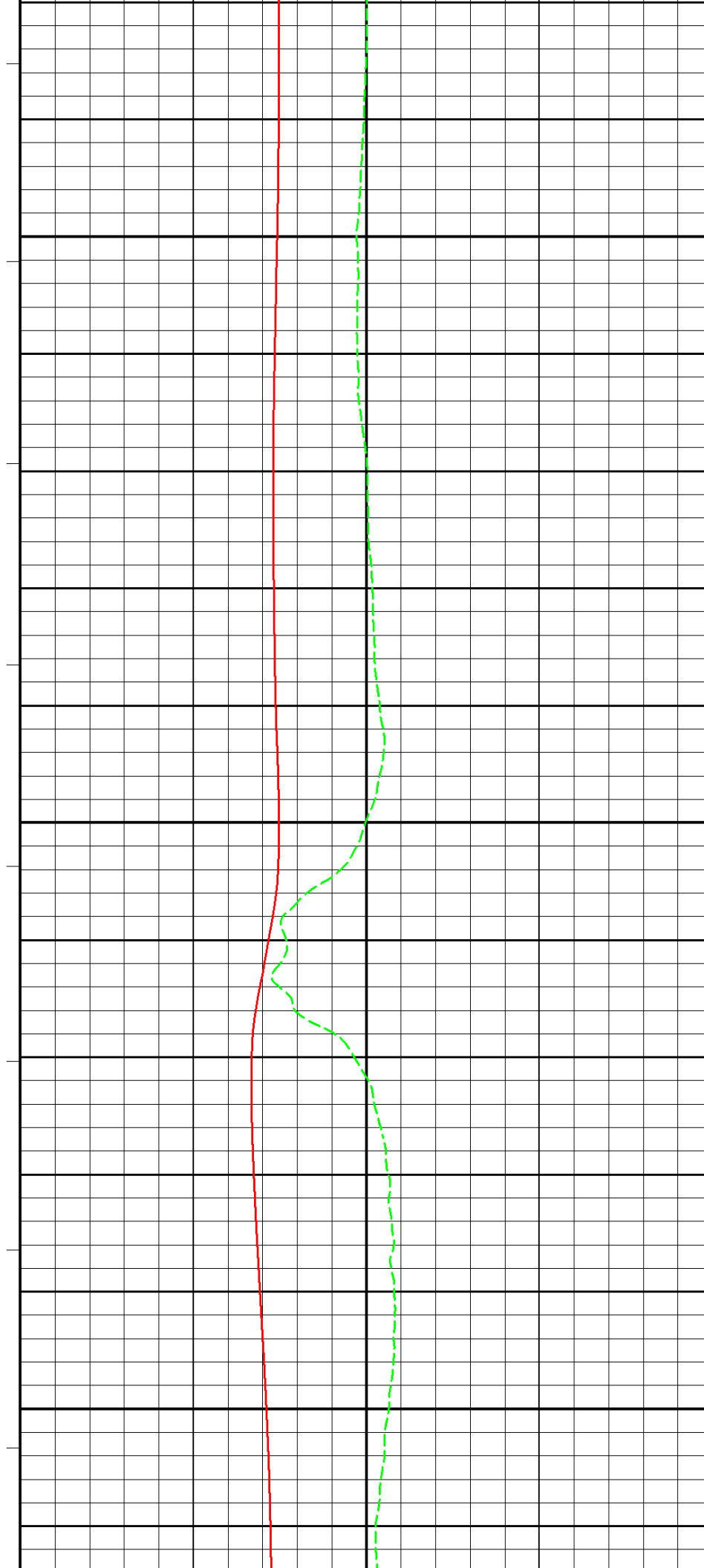


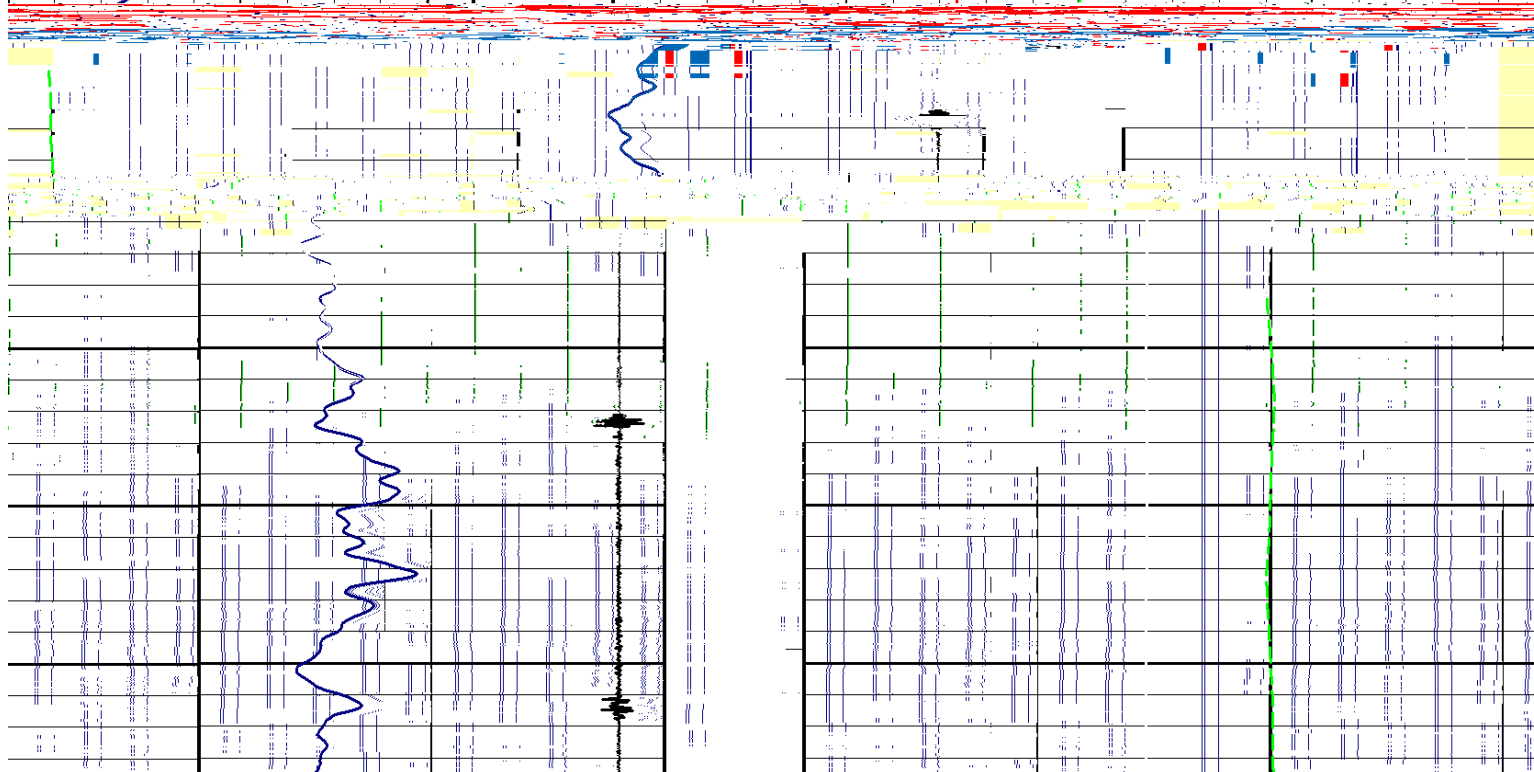
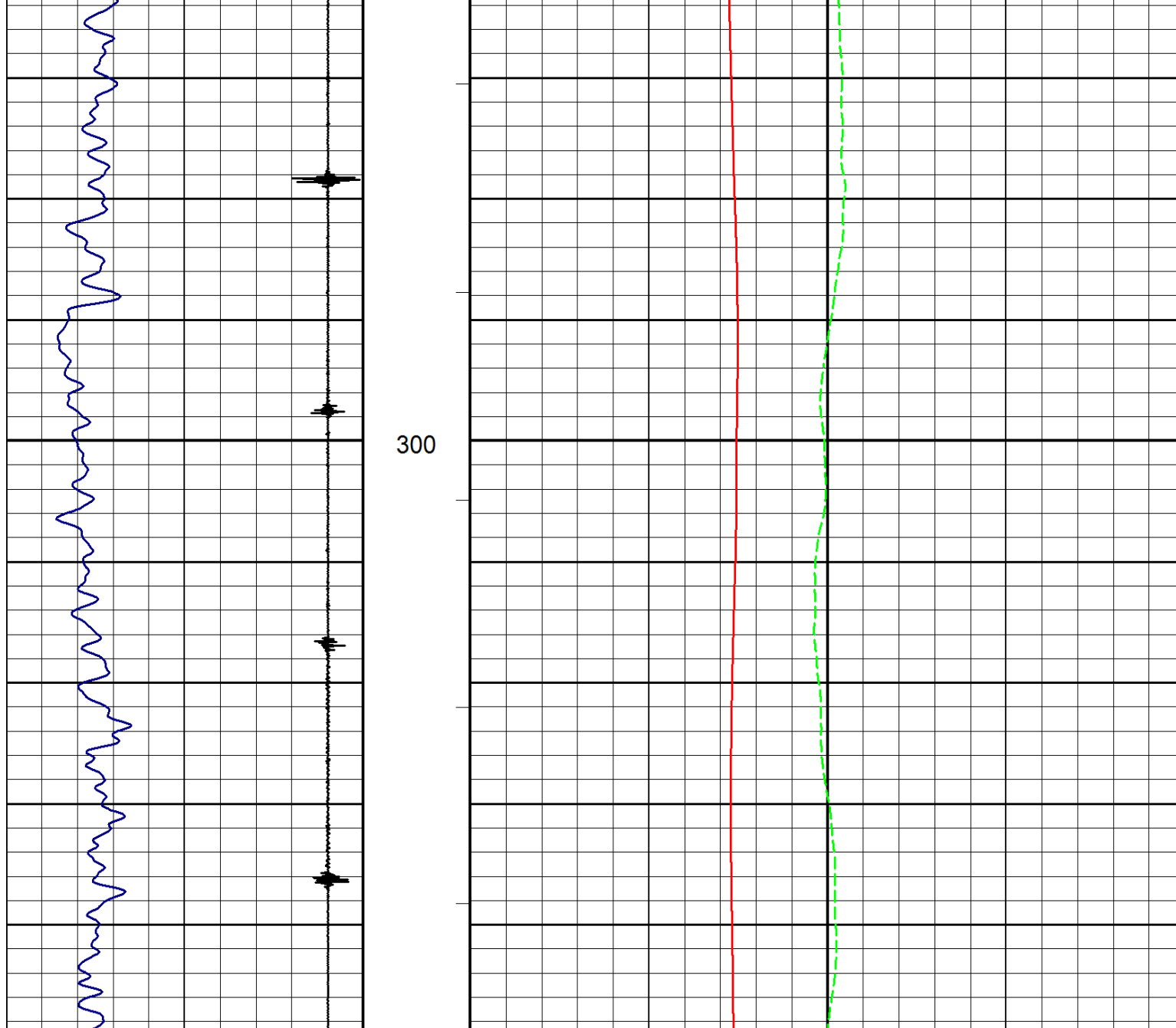


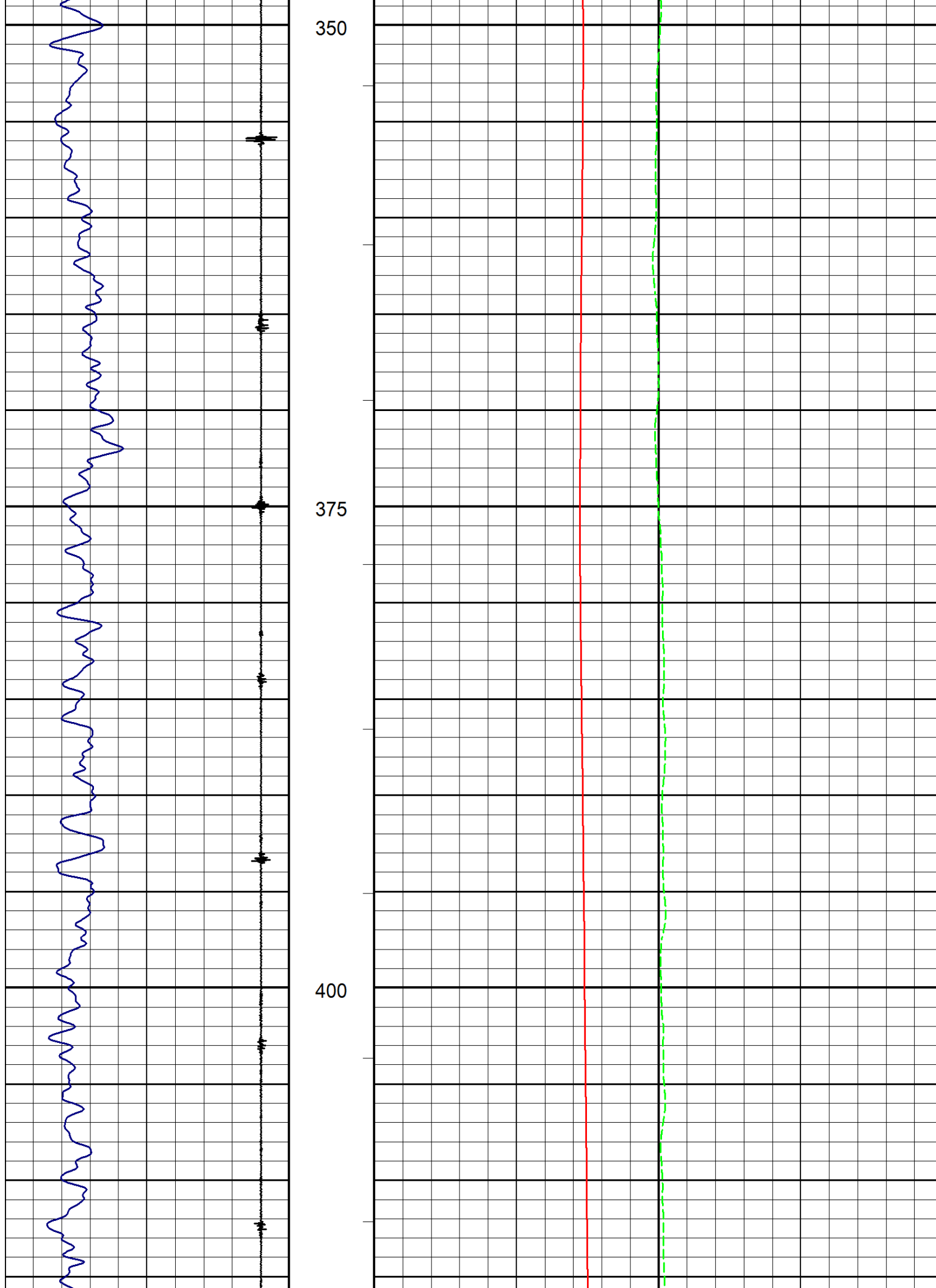
225

250

275



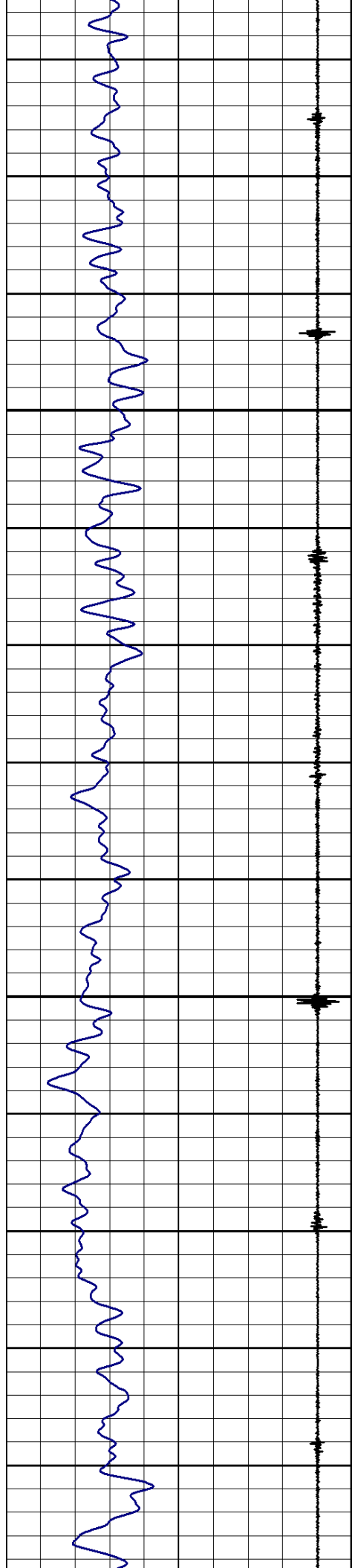




425

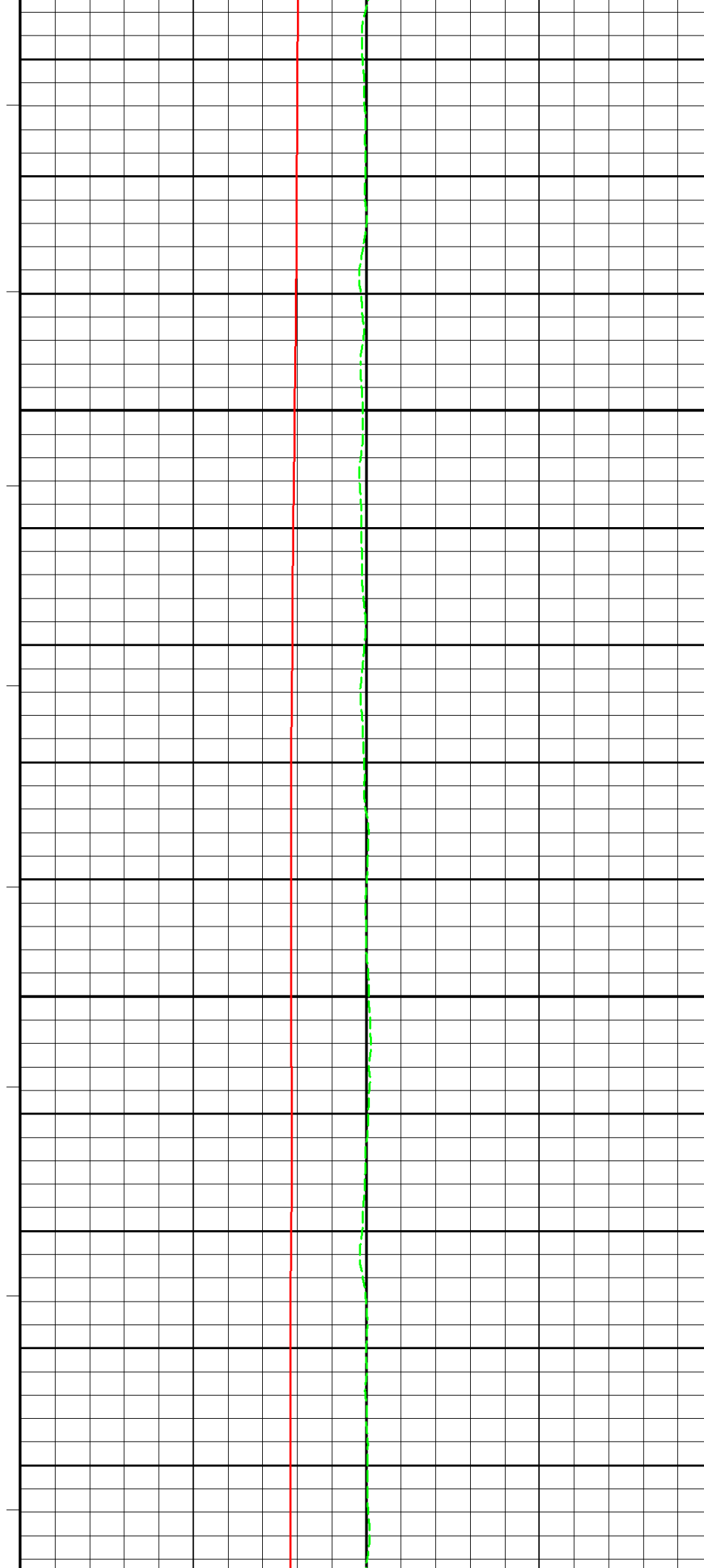
450

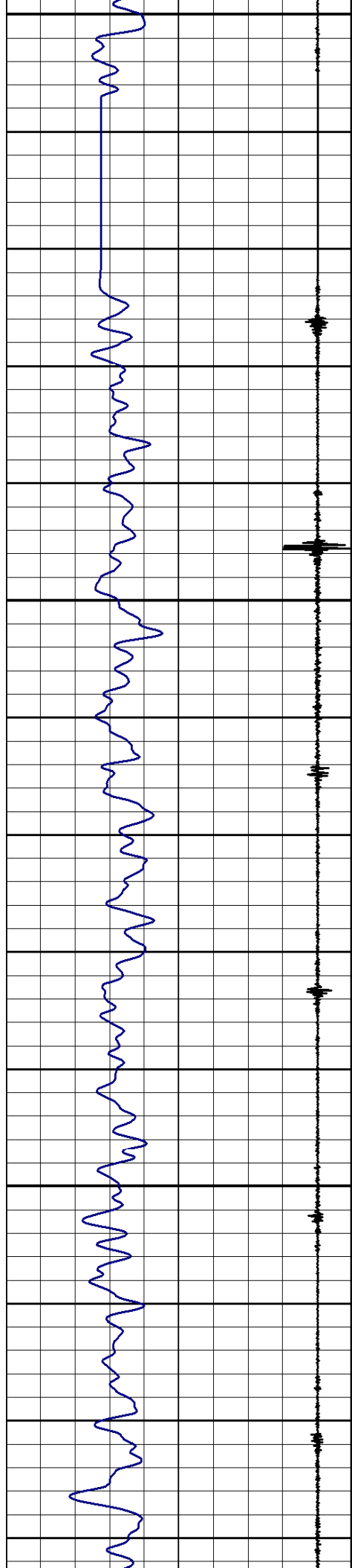
475



500

525

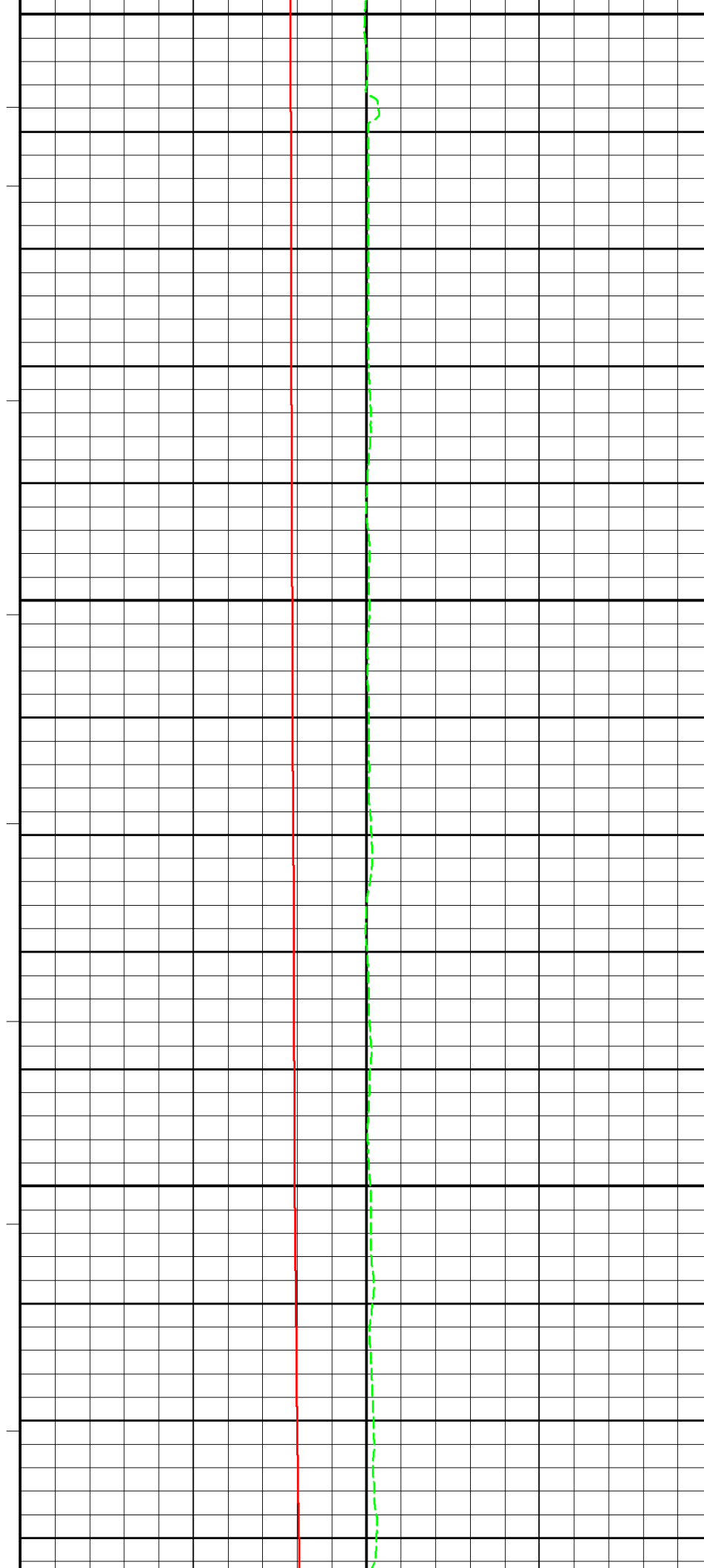


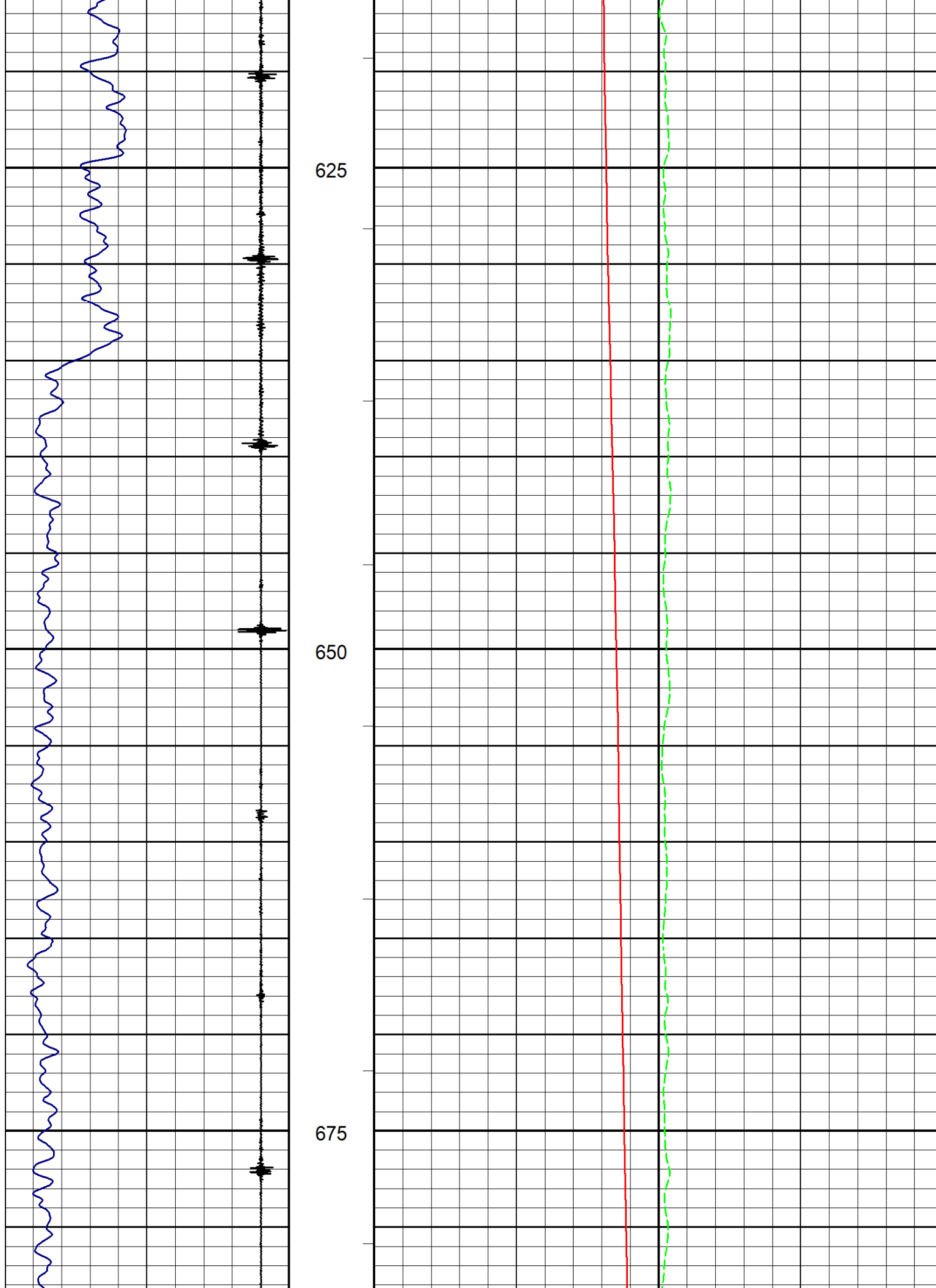


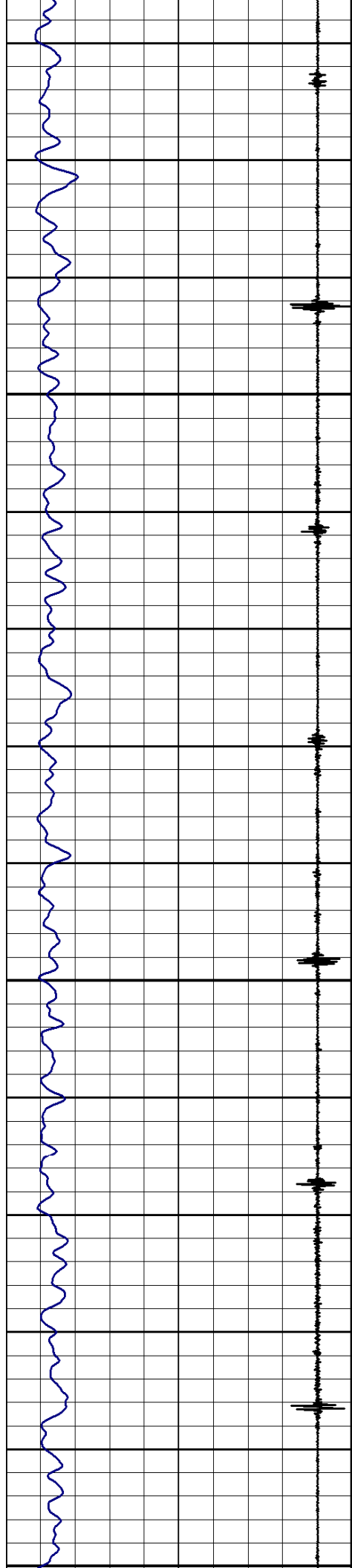
550

575

600



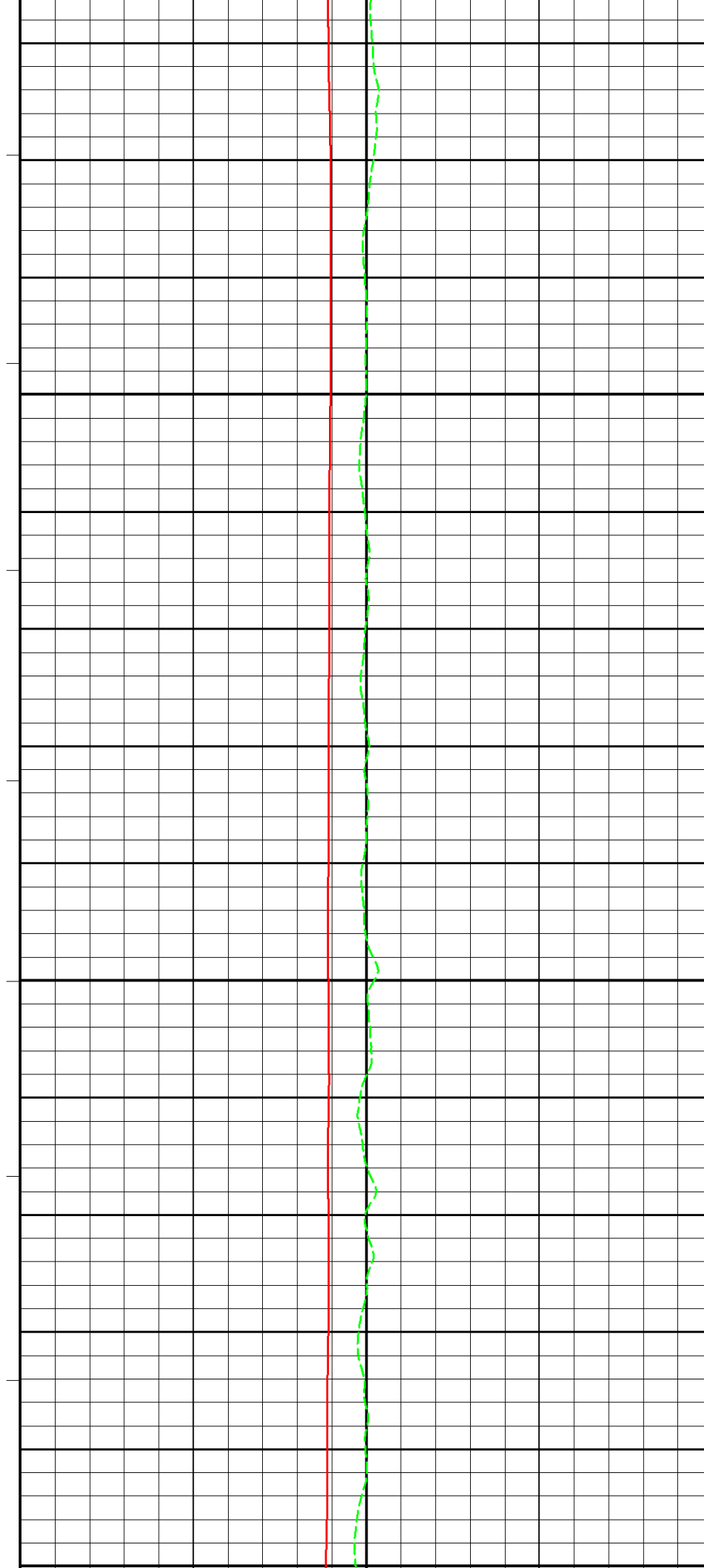


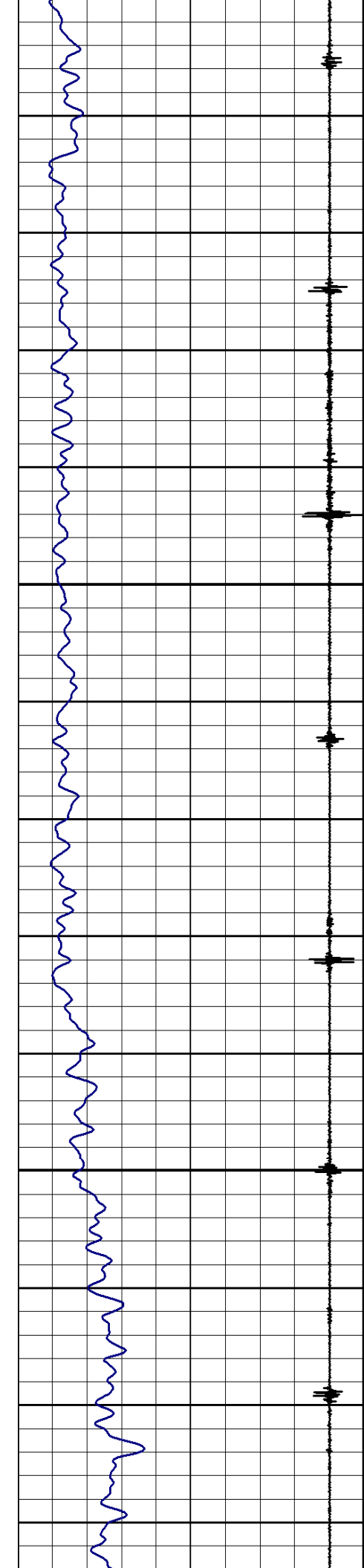


700

725

750

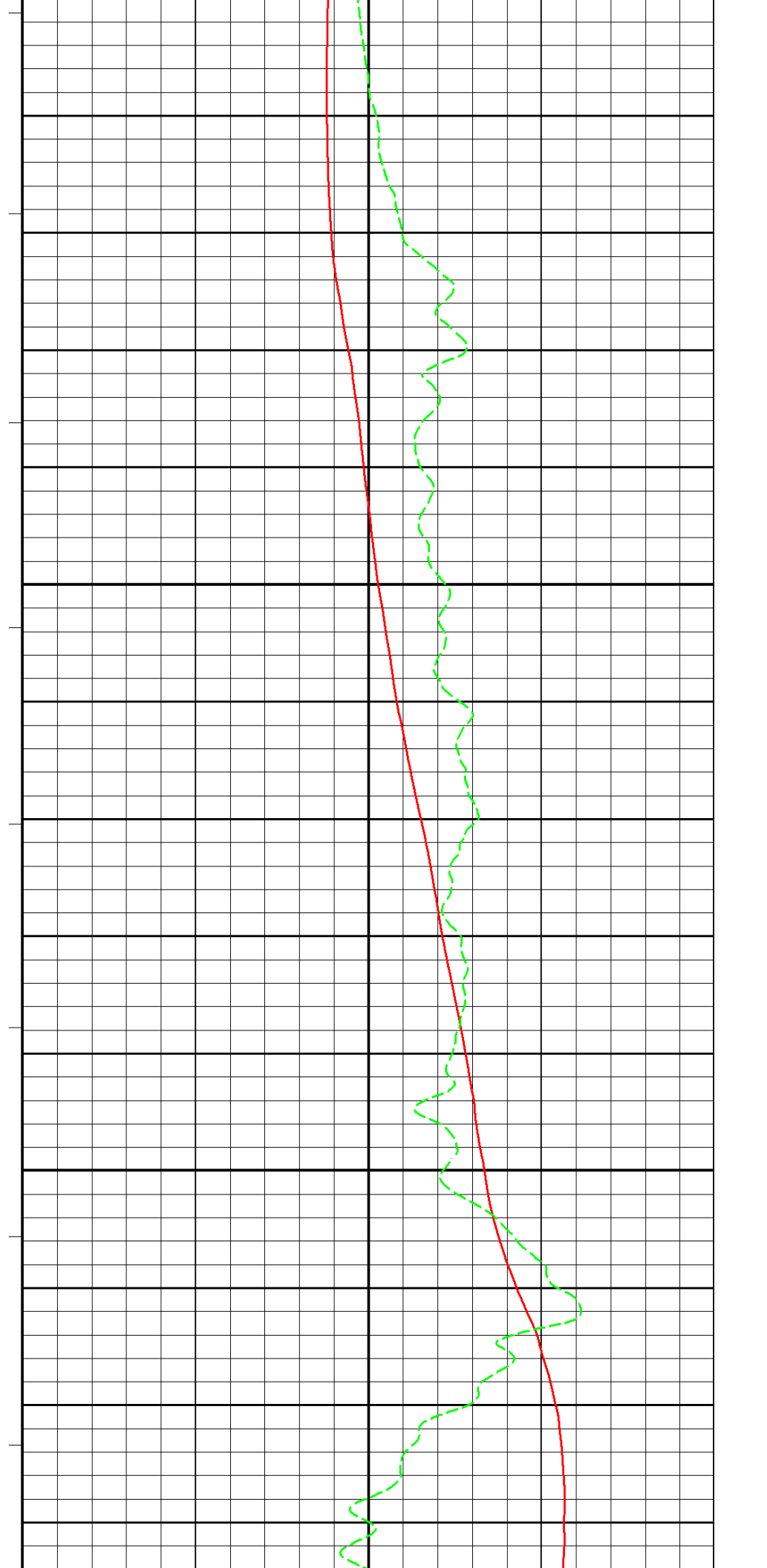


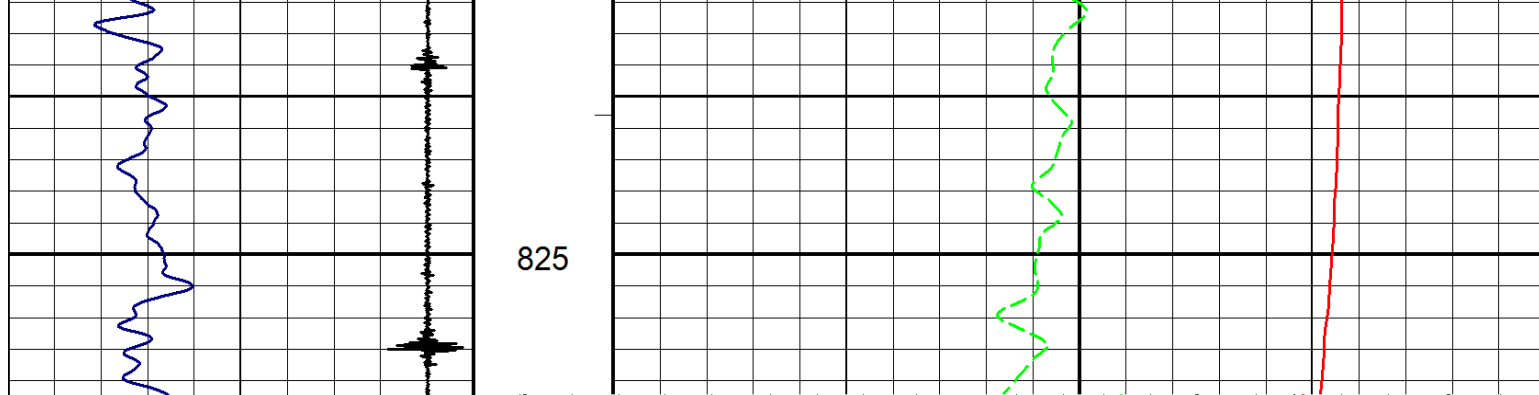


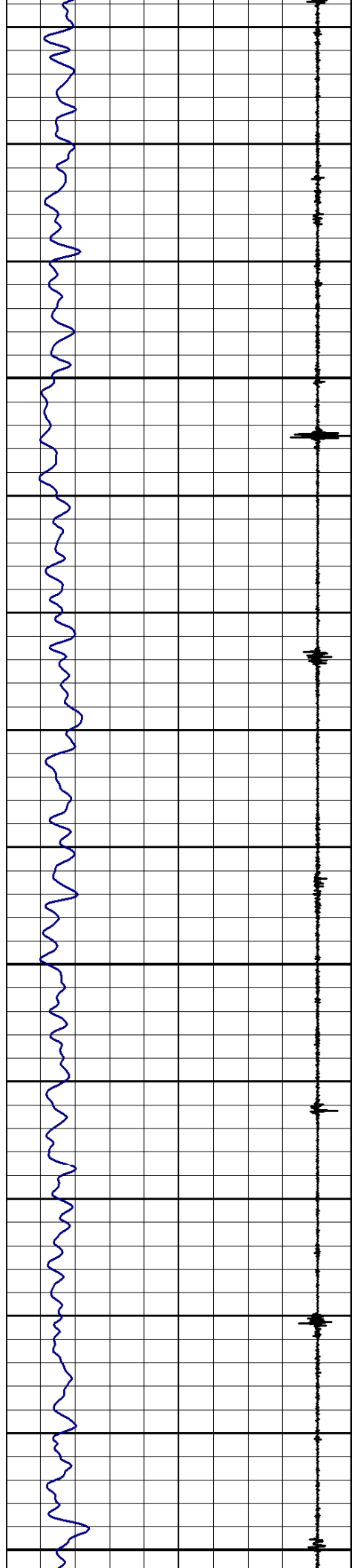
750

775

800



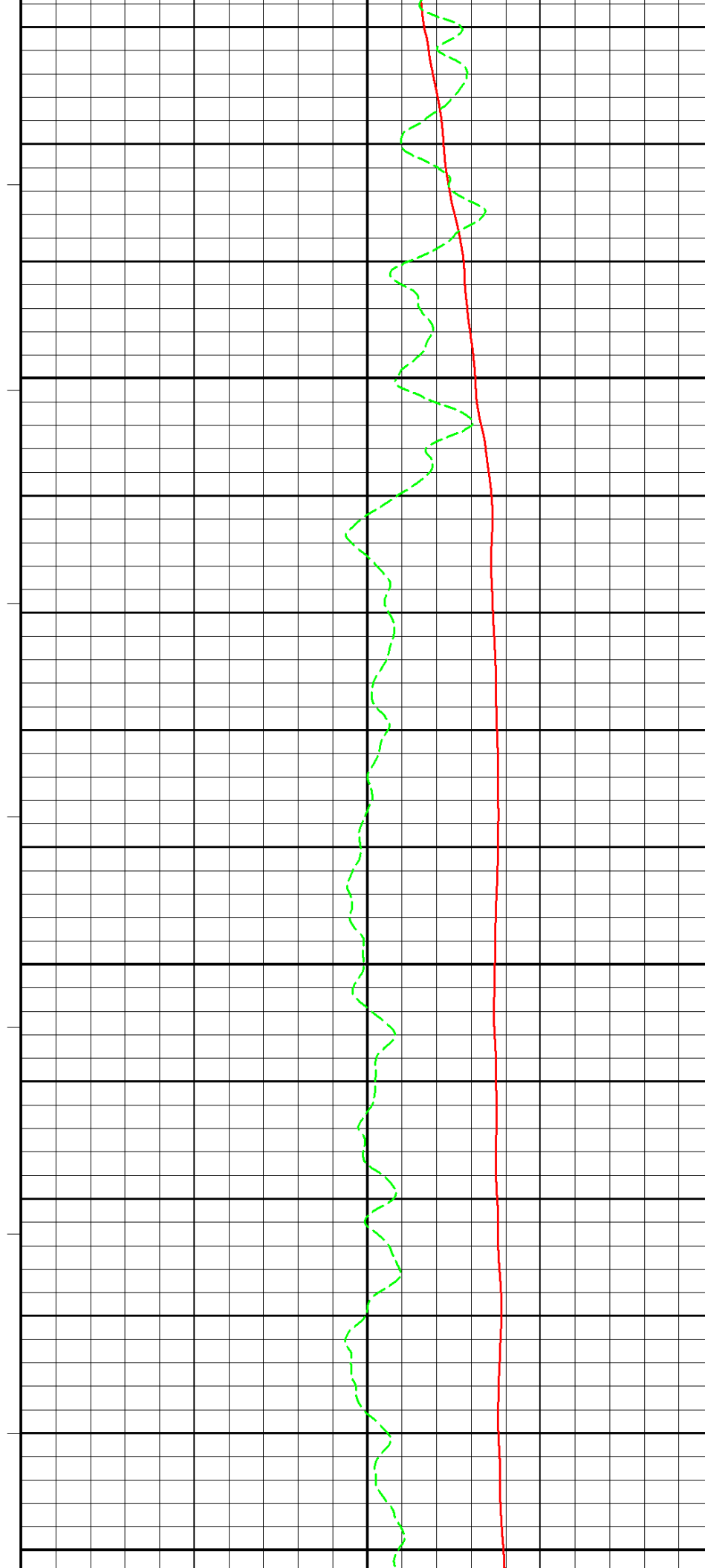


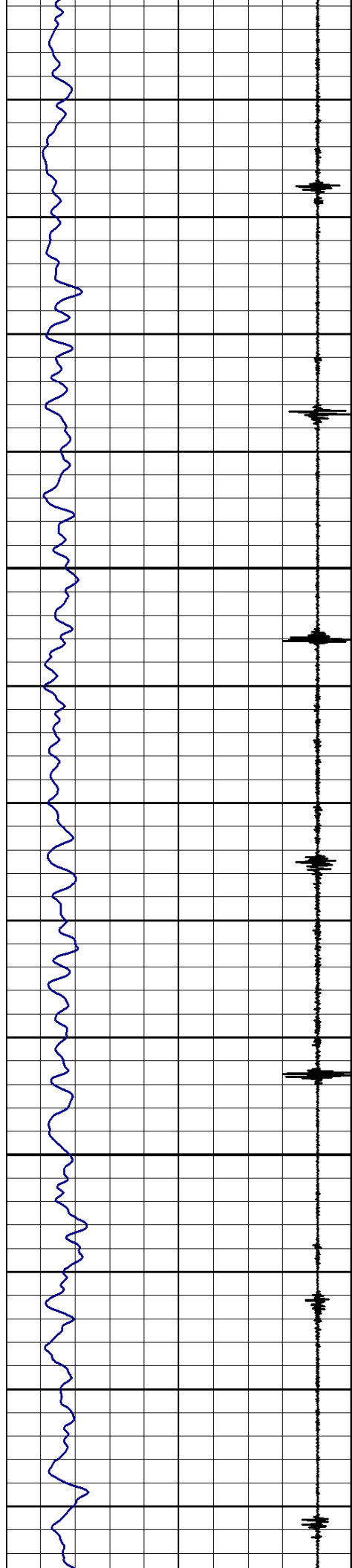


900

925

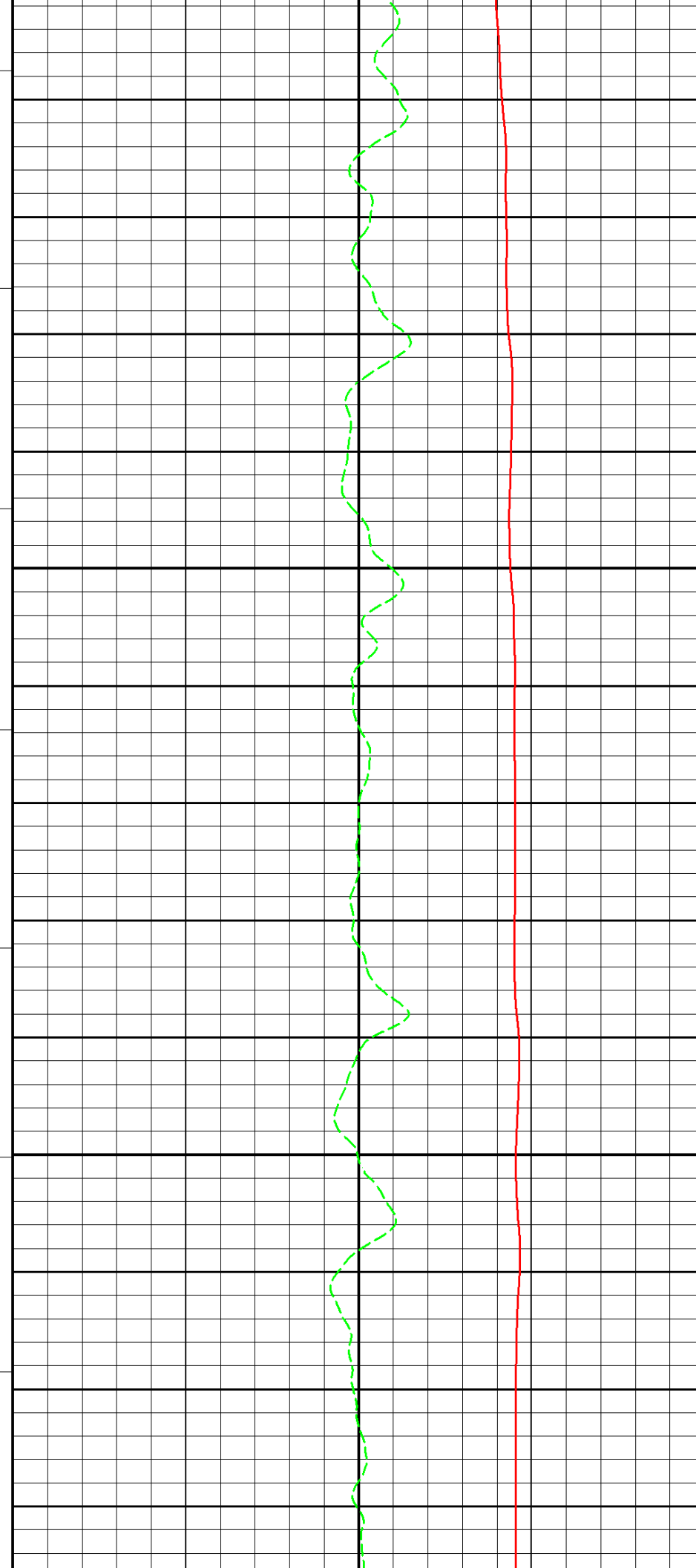
950

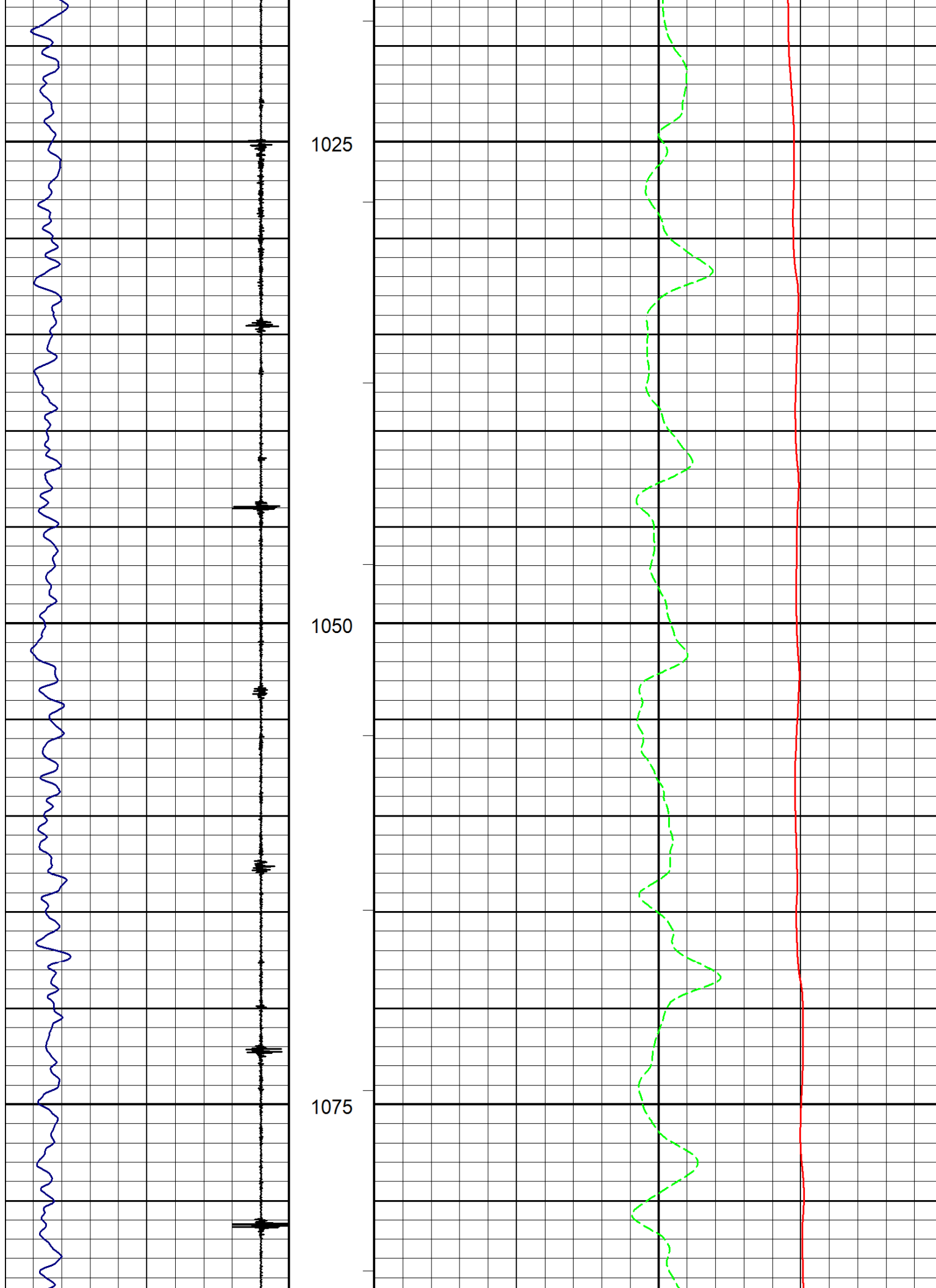


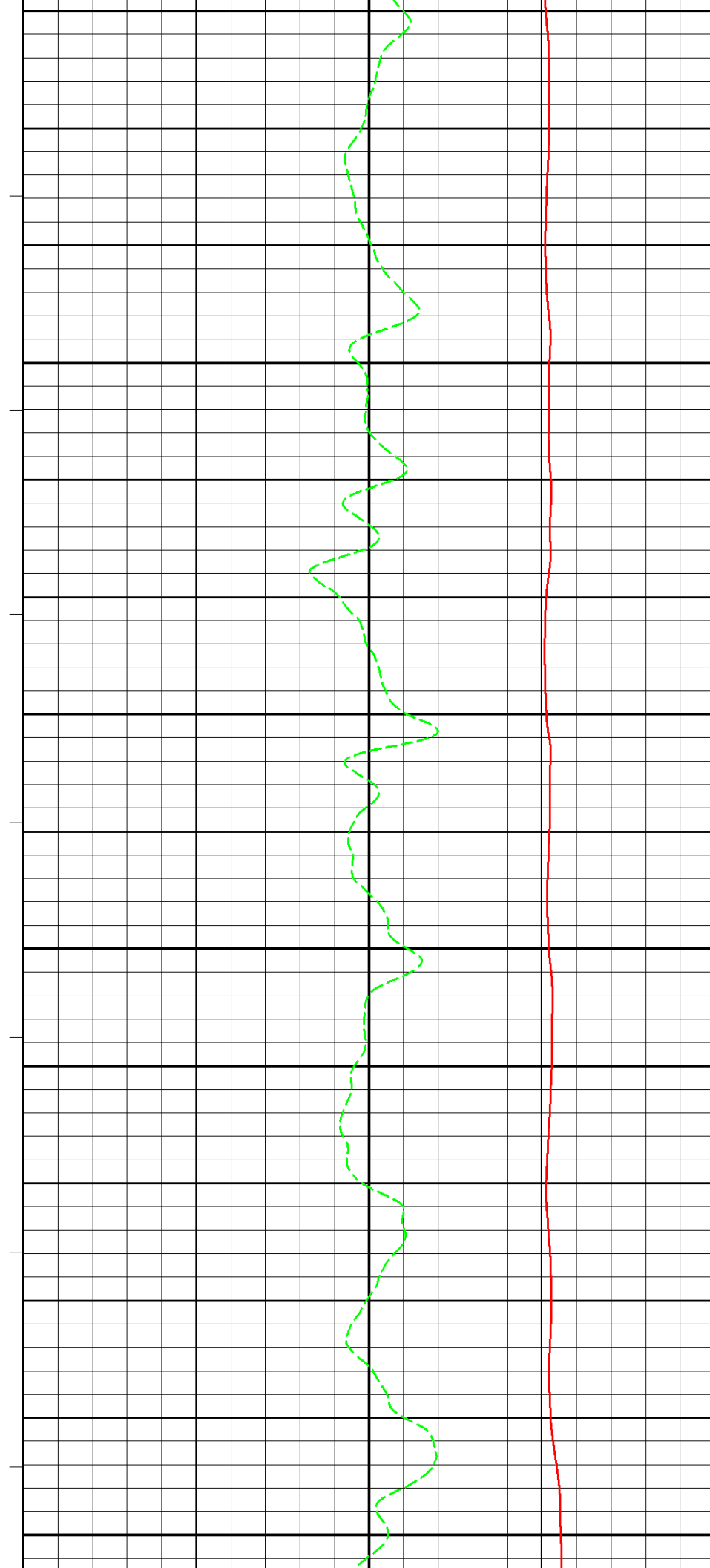
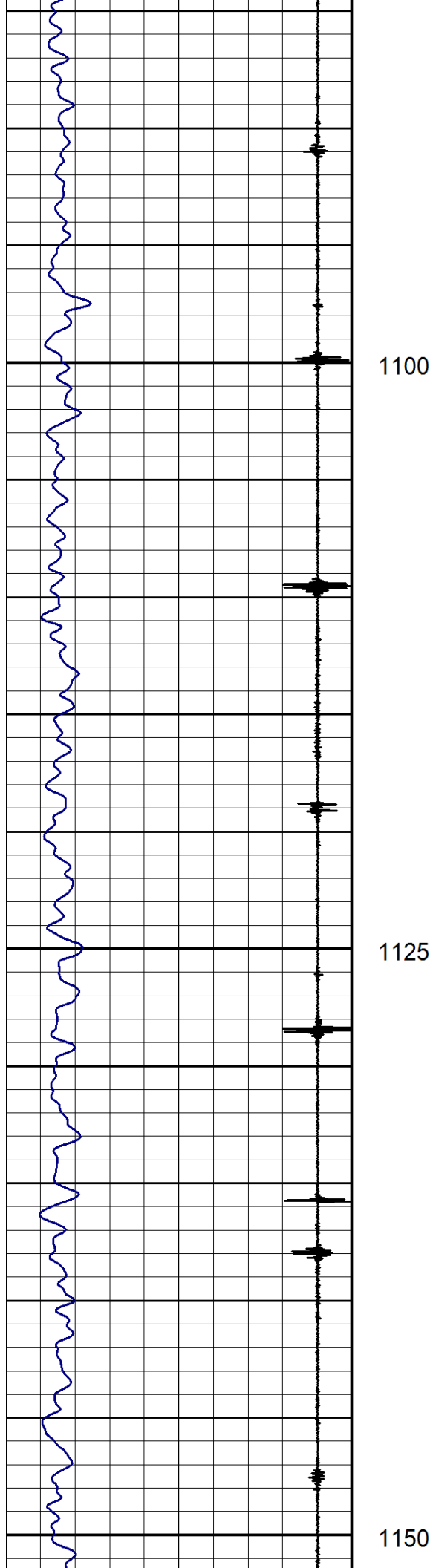


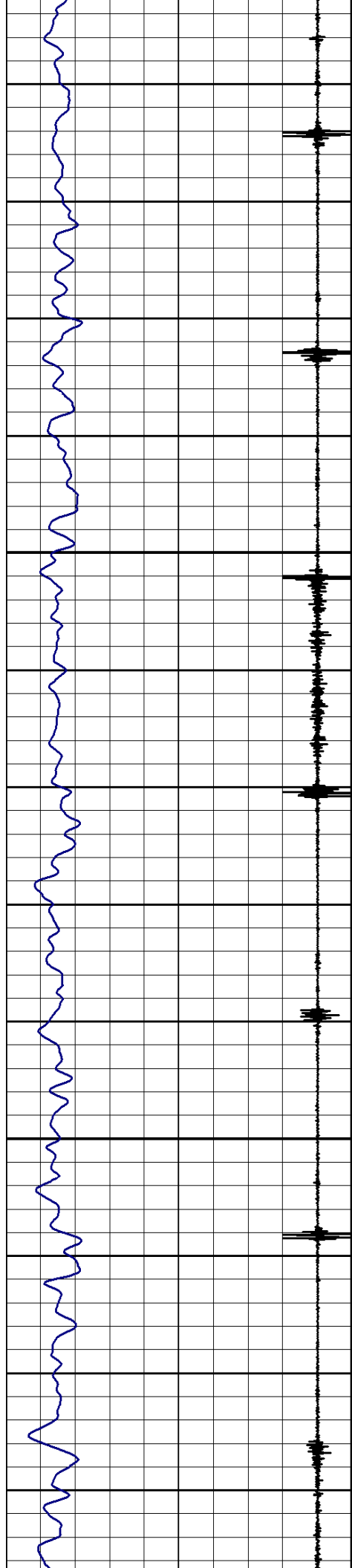
975

1000





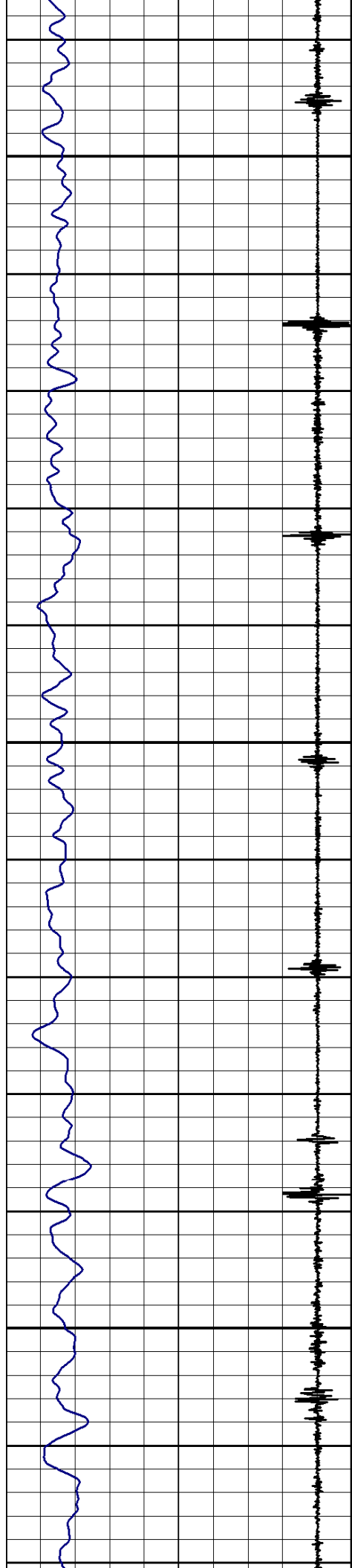




1175

1200

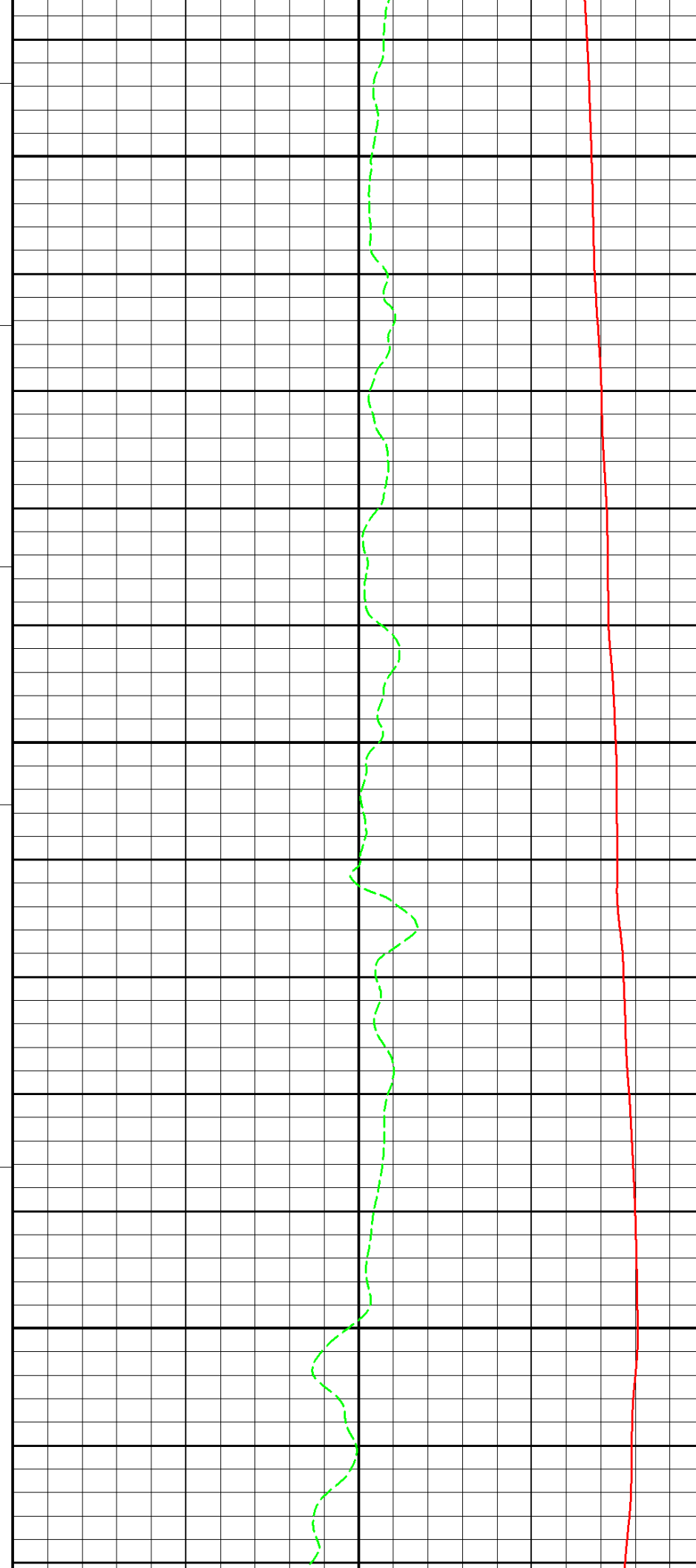


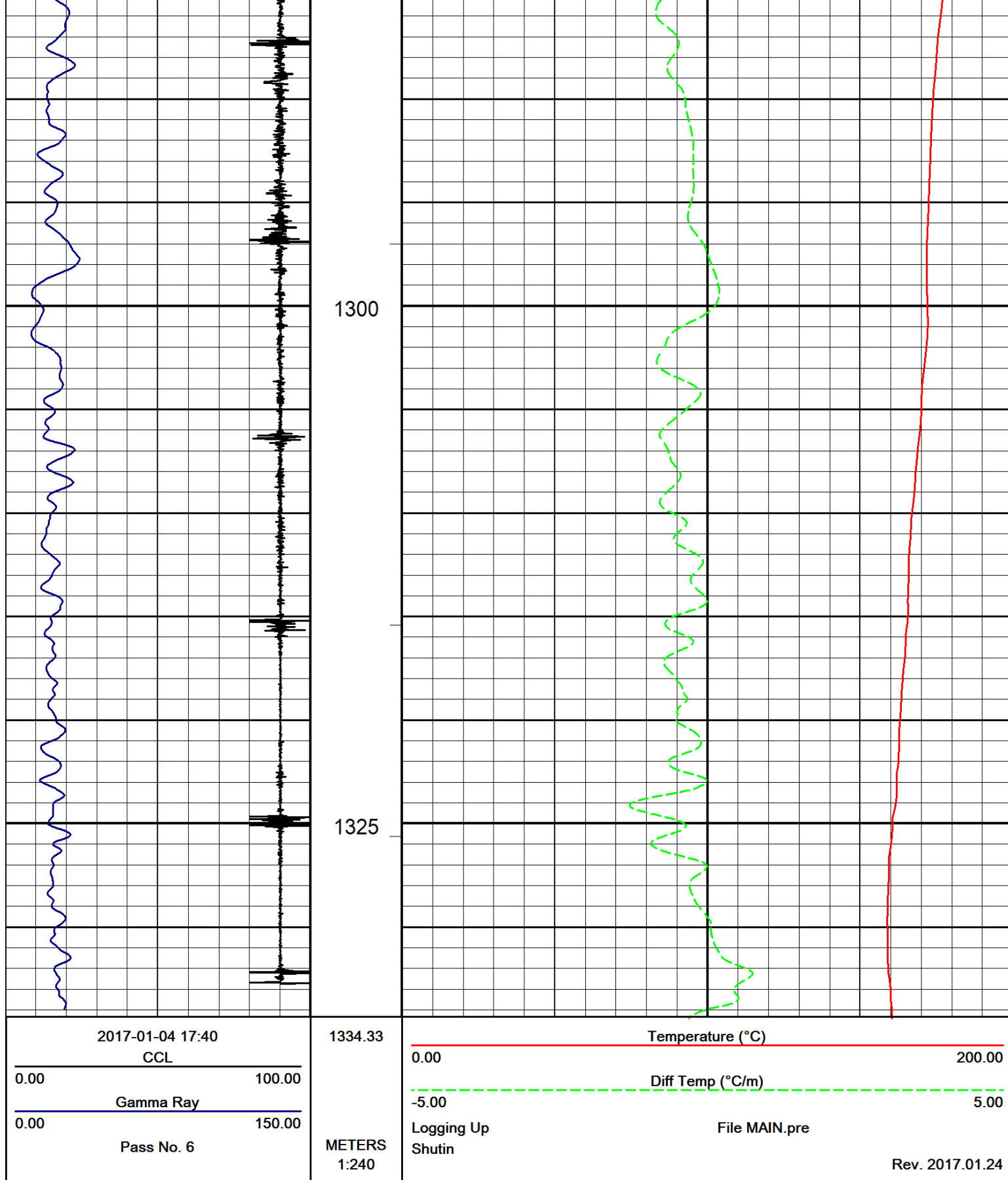


1225

1250

1275





Trace Summary											
Name	Units	Track	Chart Left	Chart Right	Channel	Gain	Shift	Filter	Coeff	Depth Offset(m)	Time Sample
CCL		1	0	100	16	0.037	90	None		0	
Gamma Ray		1	0	150	4	3	5	Butterworth	0.8	0.95	2
Temperature	°C	4	0	200	9	1	0	Butterworth	1.2	1.57	2

Temperature	°C	4	0	200	8	1	0	Butterworth	1.2	1.57	2
Diff Temp	°C/m	4	-5	5		1	0	Butterworth	1.2	1.57	



Company CANADIAN NATURAL RESOURCES LIMITED

Well CNRL 32-07 CADOT 2-19-85-18

Field PEACE RIVER

Province ALBERTA

LSD. 02 SEC. 19 TWP. 085 RGE. 18 W. 5