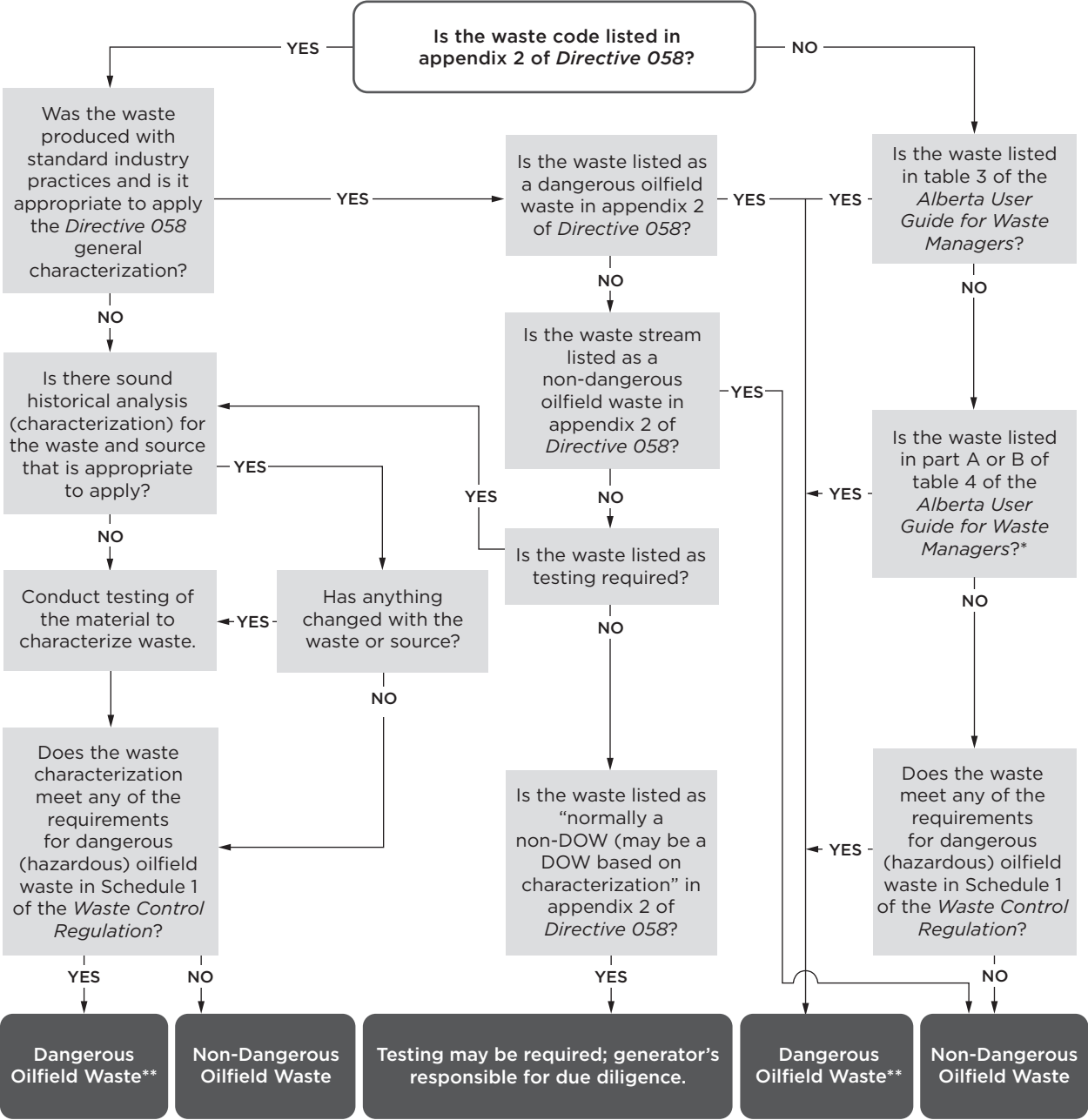
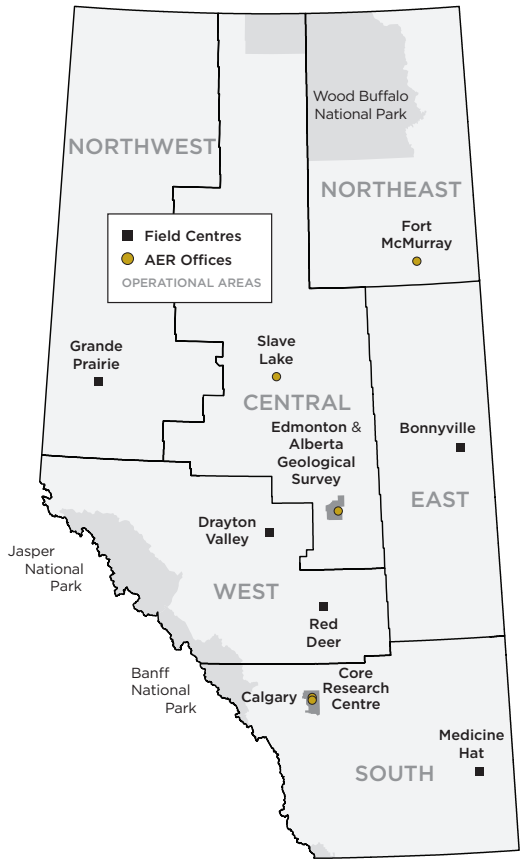


Oilfield Waste Classification Quick Reference Help Guide



Non-dangerous oilfield waste is equivalent to non-hazardous waste and dangerous oilfield waste is equivalent to hazardous waste.
*Empty containers and rinsed containers and small volumes may be non-DOW, see section 2 of Directive 058.
**Not considered a DOW if meets small volume exemption; see section 2 of Directive 058.

AER Offices and Field Centres



AER Contact Information

Oilfield waste inquiries
directive058@aer.ca

Inquiries
1-855-297-8311
inquiries@aer.ca

24-hour emergency
1-800-222-6514

www.aer.ca

Last updated: April 2022

Waste Characterization for Oilfield Waste Generators



24-hour emergency
1-800-222-6514

This brochure is a quick field reference to aid in waste characterization
(it does not replace any rules or regulations)



Applicable AER Documents

Directives

058: Oilfield Waste Management Requirements for the Upstream Petroleum Industry

047: Waste Reporting Requirements for Oilfield Waste Management Facilities

030: Digital Data Submission of the Annual Oilfield Waste Disposition Report

These documents are available free of charge on the AER website, www.aer.ca.

Other Documents

Alberta Users Guide for Waste Managers
(Published by Alberta Environment and Parks)

Waste Control Regulation
(Published by Alberta Environment and Parks)

The AER and AEP use different terminology to classify waste, but the terms have the same meaning:

- non-dangerous oilfield waste (AER term) is the same as non-hazardous waste (AEP term)
- dangerous oilfield waste (AER term) is the same as hazardous waste (AEP term)

Waste generators and receivers should therefore be mindful of this terminology when referring to AEP documents.

Oilfield Waste

A secondary or incidental product or material or a mixture of such products or materials that results from the construction, operation, abandonment, or reclamation of an upstream petroleum facility, well site, or pipeline in Alberta.

Waste Characterization

The assessment of the physical, chemical, and toxicological characteristics (i.e., properties) of a waste.

Once an oilfield waste has been characterized, it can then be classified.

Waste Classification

Based on the waste characterization, it will fall under one of two classifications:

- Non-dangerous oilfield waste (non-DOW)
- Dangerous oilfield waste (DOW)

Waste must be classified as either DOW or non-DOW. Criteria to determine which properties classify the waste as DOW are outlined in section 2 of *Directive 058*.

Waste Generator Responsibilities

- In all cases, it is the waste generator's responsibility to ensure that all waste is characterized, classified, treated, and disposed of correctly.
- Waste generators must implement an accurate and complete waste tracking system for documenting both DOW and non-DOW waste.

Dangerous Oilfield Waste

The following are considered DOW:

- waste types listed in table 3 of the *Alberta Users Guide for Waste Managers*
- commercial products or off-spec products listed in table 4 of the *Alberta Users Guide for Waste Managers*
- waste with any properties as per the *Waste Control Regulation*, Schedules 1 and 2
- containers as identified in section 2 of *Directive 058*

Waste with these properties require special attention to ensure that they are handled, treated, and disposed of properly.

Manifesting

The AER's Alberta Oilfield Waste Form is to be used for the transportation of DOWs within Alberta and must adhere to the manifesting requirements in section 3 of *Directive 058*.

Important

Waste must not be mixed with any solid or liquid for the primary purpose of dilution to avoid any Alberta regulatory requirements.

Listed Waste Streams

A list of oilfield waste codes is found in appendix 2 of *Directive 058*.

Waste listed in appendix 2 of *Directive 058* have been characterized and classified based on historical knowledge, previous testing, and a known origin of waste.

If applying these classifications, it is imperative that generators examine waste and determine if standard practices have resulted in the production of that waste and that the waste fits the listed type.

Operations, process, or site-specific conditions may result in a change in a waste's characteristics; therefore, using appendix 2 may not be appropriate.

Waste types not listed in appendix 2 of *Directive 058*, must be classified according to section 2 of *Directive 058*.

Waste Characterization Summary

Waste generators must ensure that all oilfield waste is characterized and classified. Waste characterization can be based on any of the following:

- historical knowledge of the waste via waste data in appendix 2 of *Directive 058* or the *Alberta Users Guide for Waste Managers* (if appropriate)
- current waste characterization (lab analysis)
- in-depth knowledge of the waste based on historical waste or waste origin characterization (lab analysis) conducted in the past and nothing is believed to have changed from when analysis was conducted