

Baytex Energy Ltd.

Alt-FEMP Pilot Program 2024 Performance Report

Date: 4th April 2025

Submitted by:

Laureen Luross

Director, Sustainability and Business Intelligence

Susan Dennett

Team Lead, Sustainability Reporting

Blaise Lalonde-Oga

Sustainability Analyst



Table of Contents

EXECUTIVE SUMMARY	4
1. SCREENING DATA	6
2. FOLLOW-UP DATA	7
3. EMISSIONS SUMMARY	10
4. EMISSION REDUCTION SUMMARY	18
5. TECHNOLOGY LIMITATIONS	20
6. SUCCESS OF THE ALT-FEMP	21
7. NONPERFORMING PROGRAM ELEMENTS	21
8. ADDITIONAL CONTROL MEASURES	21
9. KEY PERFORMANCE INDICATORS	21
APPENDIX A: RAW DETAILED DATA	23
APPENDIX B: SCREENING DATA – SITE-TOTAL EMISSIONS BY CAMPAIGN	24
APPENDIX C: SCREENING DATA – INDIVIDUAL EMISSIONS	28



Figures & Tables

<i>Figure 1: Distribution of site-total emission rates measured during screening campaigns.</i>	11
<i>Figure 2: Distribution of individual emissions, by rate, measured during screening campaigns.</i>	12
<i>Figure 3: Distribution of site-total emission rates measured during OGI survey campaigns (e.g. follow-up and independent campaigns) of the alt-FEMP region.</i>	14
<i>Figure 4: Distribution of individual emissions, by rate, measured during OGI survey campaigns (e.g. follow-up and independent campaigns) of the alt-FEMP region.</i>	15
<i>Figure 5: Distribution of fugitive emissions, by rate, measured during OGI survey campaigns (e.g. follow-up) of the alt-FEMP region.</i>	16
<i>Figure 6. Comparison of relative cumulative frequencies for the “as-found” measured fugitive emissions versus the proposal-assumed fugitive emissions.</i>	19
<i>Table 1. Combined summary of screening data for 2023 and 2024.</i>	6
<i>Table 2. Summary of OGI follow-up data.</i>	8
<i>Table 3. Number and volume (m³/d) of emission detections by equipment type.</i>	9
<i>Table 4. Comparison of the alt-FEMP and Control regions in 2024.</i>	17

Executive Summary

Baytex Energy Ltd. (Baytex) is a Western Canadian upstream oil and gas producer who was granted approval on June 21, 2023, to implement a pilot alternative Fugitive Emissions Management Program (alt-FEMP) across their operated facilities in Alberta that fall under the Alberta Energy Regulator's (AER) Directive 060. The alt-FEMP was designed to achieve greater fugitive emissions reductions than a default program under AER Directive 060 and was approved until December 31, 2024.

For methane detection, this alt-FEMP utilized Montrose Environmental Group (Montrose) optical gas imaging cameras (OGI) along with two different site-level emission-screening technologies: Bridger Photonics, Inc.'s (Bridger) aerial-based technology and Vertex's ExACT truck-based emission monitoring sensor.

Each year, the alt-FEMP involves performing two screenings (one aerial-based and one truck-based) with comprehensive follow-up surveys conducted at the top 30% of the screened sites with emissions after each screening. In addition, a selection of Baytex's sites were designated as part of a representative Control Region where default FEMP surveys conducted via optical gas imaging (OGI) camera, in accordance with AER Directive 060, would occur. The remainder of the sites represent the alt-FEMP Region where all screenings and follow-up OGI surveys occur. The table below details the alt-FEMP's screening and follow-up activities completed in 2023 and 2024.

Timing	Site-Level Screening	OGI Surveys	Status
Q3 2023	Bridger Photonics, Inc. (Bridger) aerial-based screening	Comprehensive follow-up OGI surveys by Montrose Environmental Group (Montrose) at the top 30% of screened sites upon ranking all screened sites by total emission rate.	Completed
Q4 2023	Flux Lab ExACT (ExACT) truck-based screening completed by Vertex	Comprehensive follow-up OGI surveys by Montrose at the top 30% of screened sites upon ranking all screened sites by total emission rate.	Completed
Q2 2024	Bridger aerial-based screening	Comprehensive follow-up OGI surveys by Montrose at the top 30% of screened sites upon ranking all screened sites by total emission rate.	Completed
Q3 2024	ExACT truck-based screening completed by Vertex	Comprehensive follow-up OGI surveys by Montrose at the top 30% of screened sites upon ranking all screened sites by total emission rate.	Completed

Both the Bridger and ExACT screening technologies detected all types of emissions at the site level. Following the screening campaigns, emissions were attributed to a site/legal subdivision (LSD) and the LSDs were ranked highest to lowest by their total detected emission rates. The top 30% of these sites were then visited for emissions localization and repair, via OGI, where fugitive emissions were differentiated from vented emissions and fugitive emission sources were repaired per AER Directive 060 requirements.

1. Screening Data

Table 1 summarizes various statistics regarding the screening campaigns (aerial & truck based) across the alt-FEMP. Please note emissions detected during the screenings can be a combination of fugitive, routine venting and non-routine venting emissions. The detailed screening data is provided in an Excel attachment with this report, and the tables summarizing each site's total and individual emissions detected during each screening are provided in Appendix B and C, respectively.

Table 1. Combined summary of screening data for 2023 and 2024.

<u>Parameter</u>	<u>2023</u>	<u>2024</u>
Number of sites screened	206	233
Number of screened sites with detections	148	150
Number of detections during screenings	283	199*
Percentage of screened sites with detections (%)	72%	64%
Average emissions per screened site with a detection (m ³ /day)	290.2	186.3
Total emission rate identified (m ³ /day)	42,944	27,942
Number of sites followed-up on	108	90
Percentage of sites followed-up on vs. screened (%)	52%	39%
Number of follow-up sites with no screening detections	7	0
Number of follow-up emissions with emission source not detected by the screening technology	3	13
Average time between detection and follow-up to site (days)	51	44
Percentage of follow-up sites that are recurring (%)	57	63

Number of emissions from the screenings that were followed-up on	191	107*
Number of emissions from the screenings that were followed-up and identified as fugitive emissions	129	93
Total emission rate of fugitives identified and fixed for the calendar year (m ³ /day)	661.1	435

* Detections during ExACT truck screenings are counted as a single emission source for each site making the number of detections appear smaller compared to 2023.

2. Follow-up Data

Table 2 summarizes statistics regarding the OGI follow-up surveys of the alt-FEMP region conducted after a screening campaign. The raw detailed follow-up data is provided in an Excel attachment with this report.

OGI has the capability to localize emissions to a source-level. Also, the OGI operator can normally determine the emission type. Table 3 shows the emission source equipment types for all identified fugitive emissions including the number and volume of emissions for each equipment type.

The OGI follow-up surveys were completed within 60 days of the last day of the screening campaign as outlined in the Alt-FEMP approval.

Table 2. Summary of OGI follow-up data.

Year		2023	2024
Number of sites followed-up on for the year		108	90
Percentage of screened sites followed-up on (%)		52%	39%
Percentage of sites with screening detections followed-up on (%)		45%	55%
Number of follow-up surveys where no emissions were found		59	35
Average time between detection and follow-up to site (days)		51	44
Percentage of follow-up sites that are recurring (for the calendar year – following-up on a site more than once)		57%	63%
Number of detections by emission source type (n)	Fugitives	139	104
	Vents	N/A**	291**
	Total	139	395
Volume of detections by emission source type (m ³ /day)	Fugitives	744.1	508.3
	Vents	N/A**	2,787.1**
	Total	744.1	3,295.4
Identified emission source equipment types per follow-up per screening campaign (e.g., tank, compressor seal)		See Table 3	See Table 3
Total number of detections (Ref: Table 3)		139	395
Total volume of detections (m ³ /day) (Ref: Table 3)		744.1	3,295.4
Number of recurring leaks observed (if the leak occurred more than once per year)		N/A	N/A
Total emission rate of fugitives identified and fixed for the calendar year (m ³ /day)		661.1	443.6

****NOTE:** Vent emission data was not comprehensively collected in 2023 and thus is not available. Vent emission data was collected in 2024 and is presented in this table.

Table 3. Number and volume (m³/d) of emission detections by equipment type.

Identified emission source equipment types	2023		2024	
	Number of detections by equipment type	Volume of detections by equipment type (m ³ /d)	Number of detections by equipment type	Volume of detections by equipment type (m ³ /d)
controlled tank	32	387.9	30	244.7
dehydrator	2	4.2	3	26.5
flare stack	1	5.1	4	16.9
header	13	135.0	0	0
heater	4	3.8	0	0
meter	8	12.5	7	18.2
other	9	54.3	7	26.8
pig sender/receiver	0	0	1	2
pipeline - aboveground	0	0	1	3.9
pipeline - buried	0	0	0	0
pneumatic instrument	0	0	6	15.6
pneumatic pump	0	0	0	0
reciprocating compressor	20	39.4	36	246.6
screw compressor	6	14.4	9	22.7
separator	28	51.9	37	97.2
surface casing vent	0	0	0	0
sweetening process	0	0	0	0
treater	0	0	3	4.1
uncontrolled tank	3	12.8	231	2487.8
vent stack	0	0	0	0
wellhead	13	22.7	20	82.8
Total	139	744.1	395	3,295.4

3. Emissions Summary

3.1 Screening Summary

Figure 1 shows the distribution for site-total methane emission rates detected during screening campaigns in 2023 and 2024, capturing all types of methane emissions (fugitives, routine venting, and non-routine venting). The graph allows one to discern how many site-total emission measurements reported emission rates within a certain range (e.g. emissions with rates between 0 and 100 m³/day where individual emissions on a single site from one screening are summed).

Figure 2 shows the distribution for individual emission rates detected during the 2023 and 2024 screening campaigns. Screening technologies are generally unable to determine the type of methane emission measured (fugitives, routine venting, and non-routine venting). The graph allows one to discern how many individual emission measurements had an emission rate within a certain range (e.g., emissions with rates between 0 and 100 m³/day). Note that the ExACT truck screening only provides a site-total emission rate counting as a single emission rate.

Screening Site-Emissions Distribution

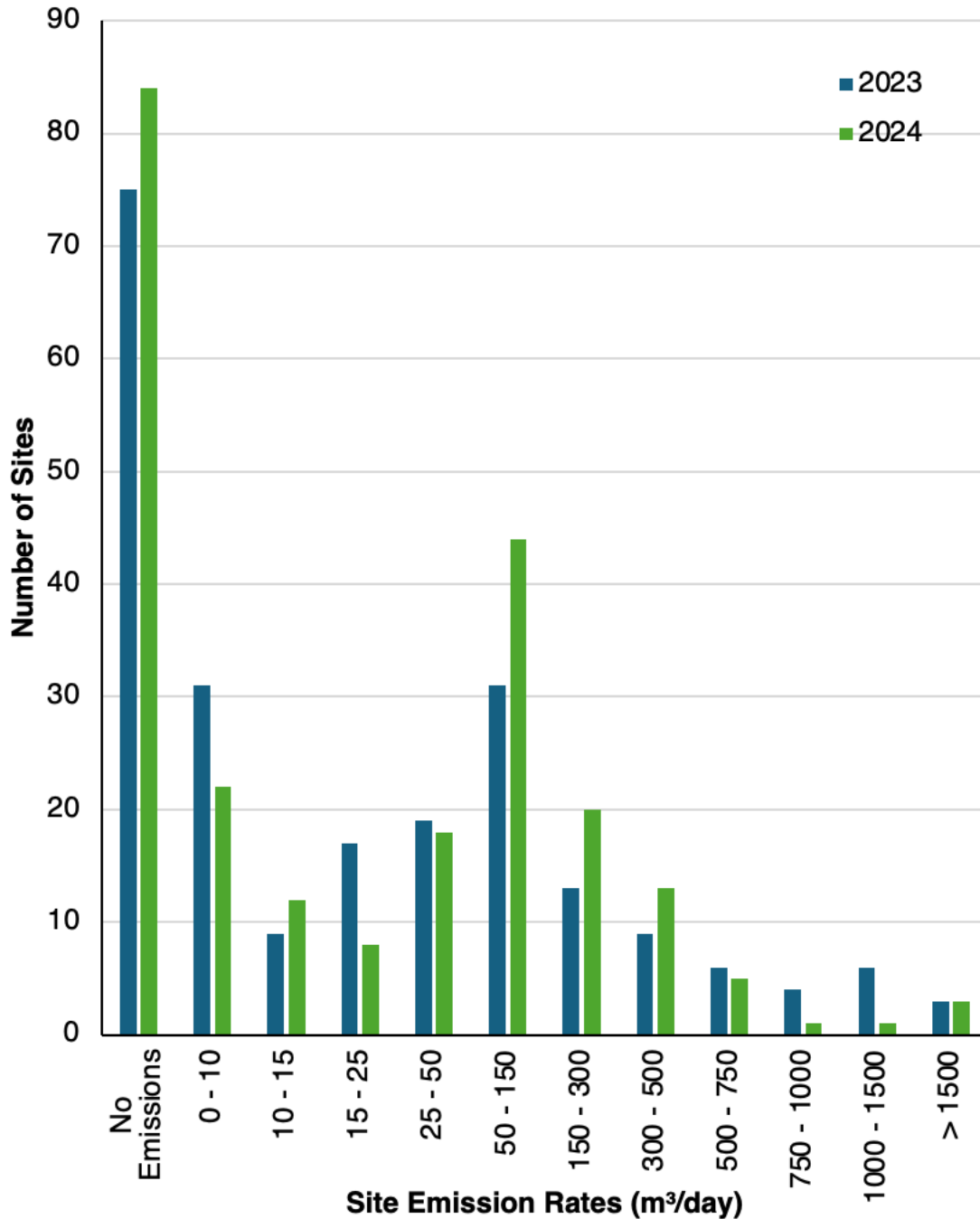


Figure 1: Distribution of site-total emission rates measured during screening campaigns.

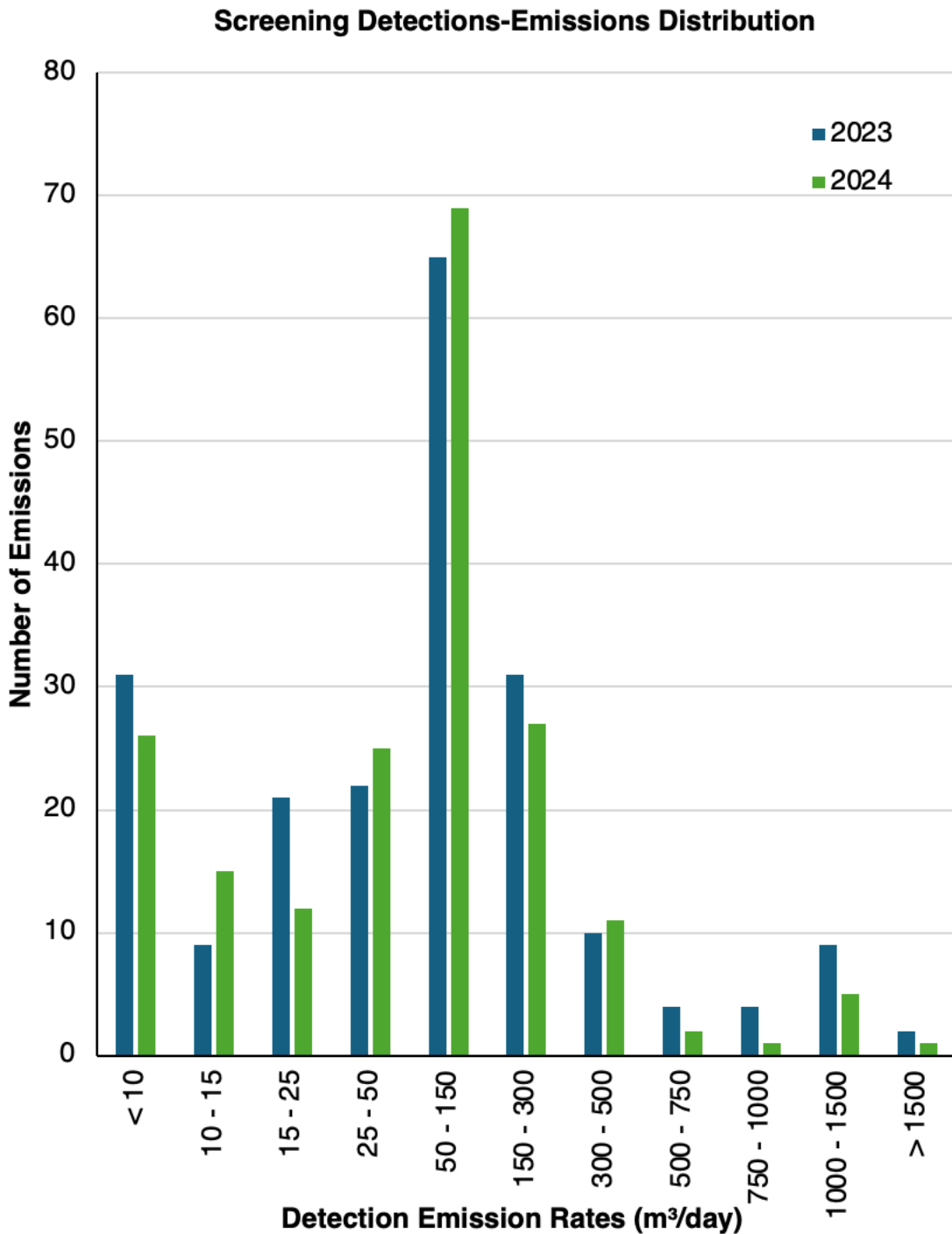


Figure 2: Distribution of individual emissions, by rate, measured during screening campaigns.



In general, screening technologies cannot discern fugitive emissions from vented emissions, thus a graph depicting the emissions distribution specifically for fugitives detected during screenings could not be generated.

3.2 OGI Survey Summary

Figure 3 shows the emission rate distribution for site-total emissions detected during 2023 and 2024 OGI survey campaigns of the alt-FEMP region, aggregating all methane emissions measured during that OGI campaign. The graph allows one to discern how many site-total emission measurements, by OGI, reported an emission rate within a certain range.

Figure 4 shows the emission rate distribution for individual emission rates detected during the 2023 and 2024 OGI survey campaigns of the alt-FEMP region. The graph allows one to discern how many individual emission measurements, by OGI, reported an emission rate within a certain range.

Figure 5 shows the emission rate distribution for individual fugitive emissions detected during OGI survey campaigns. The graph allows one to discern how many individual fugitive emission measurements reported an emission rate within a certain range.

Survey Site-Emissions Distribution

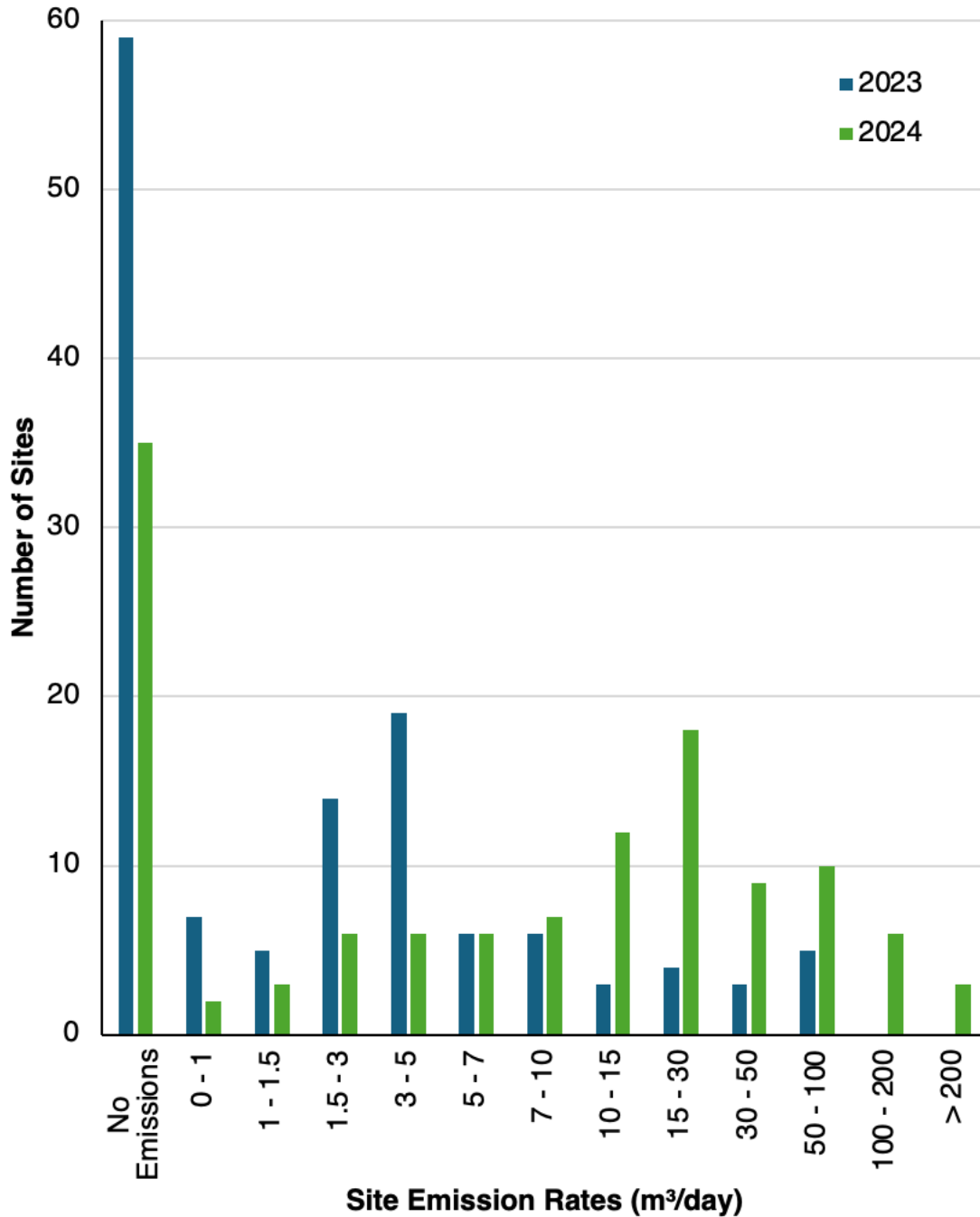


Figure 3: Distribution of site-total emission rates measured during OGI survey campaigns (e.g. follow-up and independent campaigns) of the alt-FEMP region.



Survey Detections-Emissions Distribution

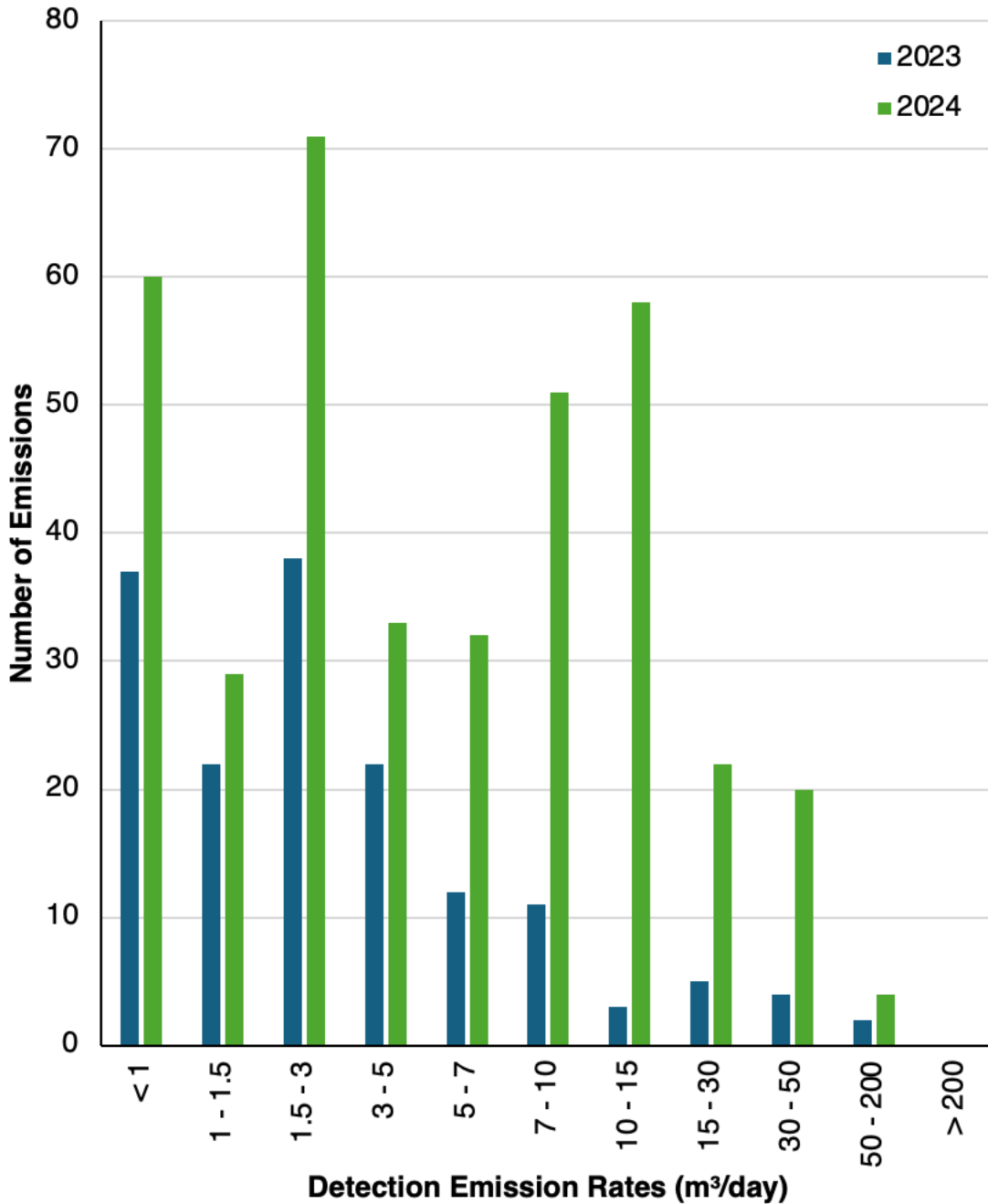


Figure 4: Distribution of individual emissions, by rate, measured during OGI survey campaigns (e.g. follow-up and independent campaigns) of the alt-FEMP region.



Fugitive Emission Distribution

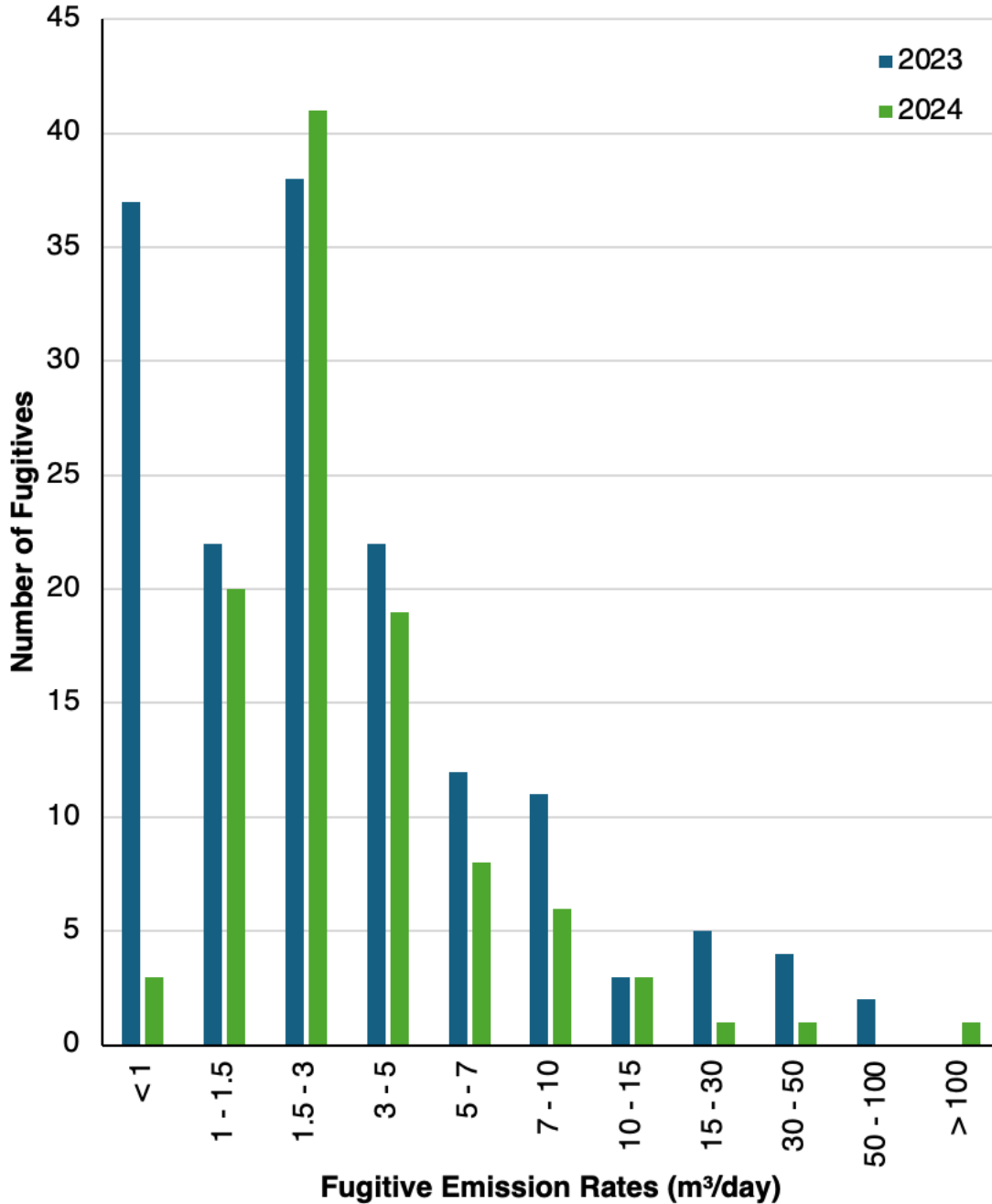


Figure 5: Distribution of fugitive emissions, by rate, measured during OGI survey campaigns (e.g. follow-up) of the alt-FEMP region.



3.3 Control vs. alt-FEMP Summary

Table 4 compares several metrics related to the sites surveyed and emissions detected via OGI surveys in the alt-FEMP vs. Control regions for the duration of the program. The average rates in the table are calculated per site per survey (e.g. the control site was surveyed six times in the two years and the average of these six was taken). The Alt-FEMP region consisted of a mix of asset types (heavy oil and conventional), whereas the Control Region was strictly heavy oil sites.

Table 4. Comparison of the alt-FEMP and Control regions in 2024.

Item	Alt-FEMP Region	Control Region
Number of sites surveyed	90	55
Number of sites in region with emissions detected via OGI	84	49
Percentage of sites in region with emissions detected via OGI (%)	93%	89%
Number of fugitives and vents detected via OGI in region	395	252
Number of sites in region with fugitives detected via OGI	46	21
Percentage of sites in region with fugitives detected via OGI (%)	51%	38%
Number of fugitives detected via OGI in region	104	38
Number of vents detected via OGI in region	291	214
Total emission rate for region's detected emissions (m ³ /day)	3,295.4	2,396.0
Total emission rate for region's detected fugitives (m ³ /day)	508.3	129
Total emission rate for region's detected vents (m ³ /day)	2,787.1	2,267.0
Average fugitive rate per site with fugitives (m ³ /day)	11.1	6.1
Average emission rate for region's detected fugitives (m ³ /day)	4.9	3.4

Number of region's fugitives repaired in a given year	99	37
Percentage of region's fugitives repaired in a given year (%)	95%	97%

4. Emission Reduction Summary

The fugitive emission data collected during the alt-FEMP was used to generate the as-found “measured fugitive emission distribution”. This consisted of all fugitive emissions recorded during surveys of both the alt-FEMP and control regions. Figure 6 shows a comparison of the as-found “measured fugitive emission distribution” to the “assumed fugitive emission distribution” employed in the modelling initially used to design the approved alt-FEMP. Additionally, the minimum detection limit (MDL) at 90% probability of detection (PoD) for the screening technology is displayed for reference.

A default Directive 060 FEMP program and the executed Baytex alt-FEMP were re-modelled using the as-found fugitive distribution using the AroFEMP software (Arolytics). Based on this re-modelling, the traditional default FEMP was predicted to emit 316,297 m³ of total fugitive methane emissions while the alt-FEMP was predicted to emit 381,633 m³.

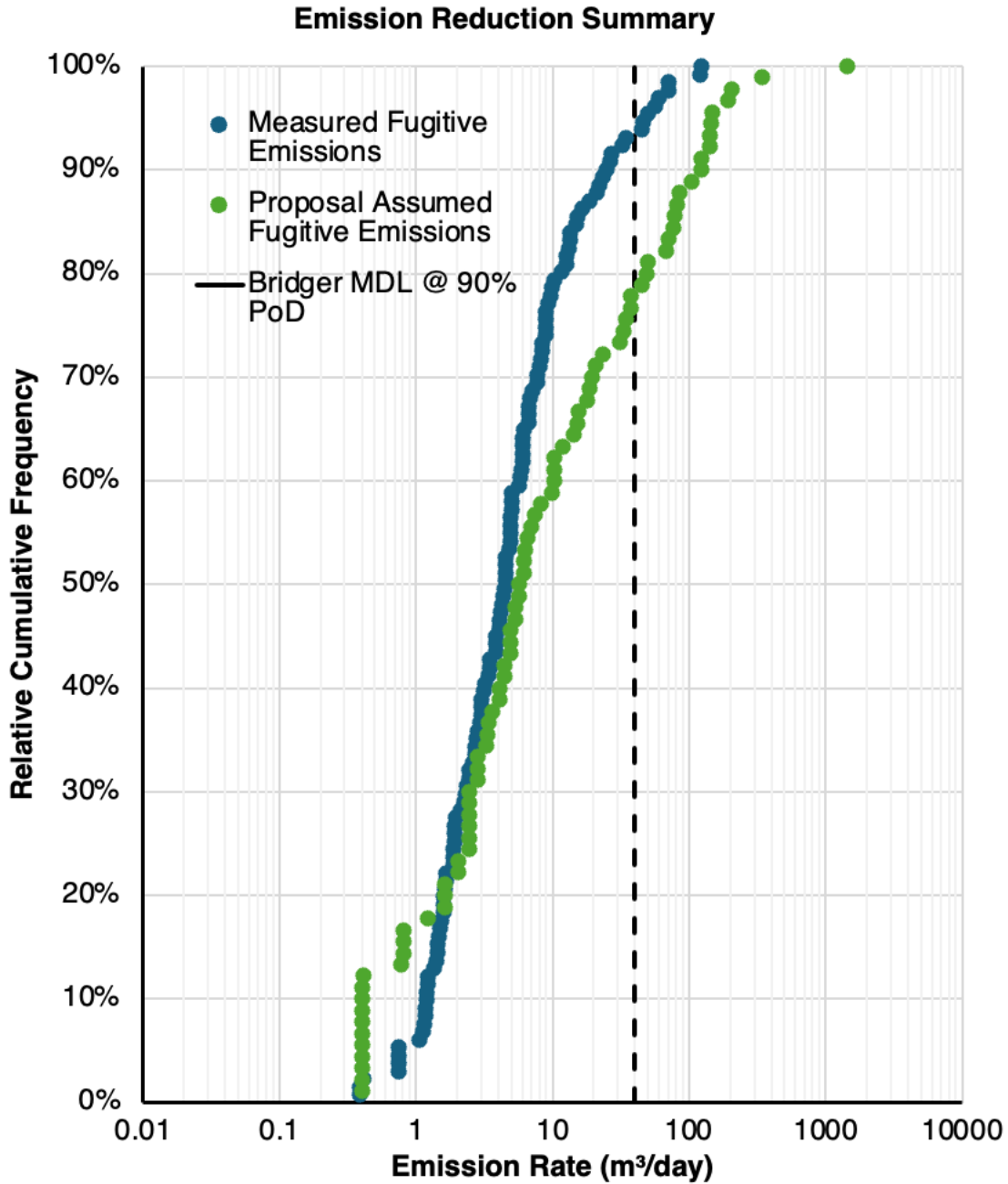


Figure 6. Comparison of relative cumulative frequencies for the “as-found” measured fugitive emissions versus the proposal-assumed fugitive emissions.

5. Technology Limitations

All three technologies deployed for emission detection (Bridger, ExACT, OGI) detected and quantified numerous methane emissions below the stated 90% PoD for the respective technologies. This does not provide a reason to suspect that the performance of the technologies in this alt-FEMP was less than expected. The OGI and ExACT technologies were not adversely affected by environmental conditions throughout the alt-FEMP. The Bridger technology was impacted as outlined below.

Bridger's detection sensitivity depends on factors including flight speed, flight altitude, measurement swath width, and wind speed. Many of these factors can be controlled by Bridger to tighten or loosen the sensitivity as required. Bridger's GML is an active, laser-based system, rather than a passive remote sensor that relies on the environment, so conditions such as cloud cover or shadows that can impair other aerial sensor technologies do not negatively impact GML. Regarding operations at northern latitudes, GML is moderately limited by snow cover and standing water. While GML will detect methane when there is snow on the ground, the detection sensitivity of the data is degraded. With standing water, Bridger's laser 'bounces' off and, as a result, no measurement is made. In several areas of Alberta, the muskeg landscape holds pockets of water in the warmer months. Based on testing and commercial projects completed in Alberta, the muskeg landscape has not negatively impacted Bridger's GML measurements. As a result of high winds rapidly dispersing emissions, Bridger limits its survey operations to ground wind speeds less than or equal to 25 mph. Bridger also implements a wind speed protocol to detect emissions at the lower end of GML's detection sensitivity. To avoid Bridger's limitations in snow, Bridger will only implement GML in snow-free months (between late Spring and early Winter). Bridger will also limit its survey operations to average ground wind speeds less than or equal to 25 mph.

The 2023 Bridger screening was delayed due to flight restrictions resulting from wildfire smoke in the summer of 2023. However, the screening detections and measurements were not directly impacted as the screening was delayed until the smoke was less severe. The Bridger screening technology cannot be used over snow, however, as the Bridger screenings were conducted in the summer months this limitation had no impact on the execution of the alt-FEMP or the detections and measurements produced by the Bridger screenings.

The ExACT technology (Vertex truck screening) is not impacted by cloud cover or shadows. ExACT can only reliably measure methane emissions in wind speeds of 0.8 metres per second or greater. The vehicle must be able to get downwind of an emission source for detection to occur. There are no limitations in required operational temperatures (ranges from -40°C to +40°C). ExACT can operate in moderate rain and snow-covered conditions without limitations. Can operate up to 1500ppm of methane. Heavy tree-cover may impact the dispersion of plumes and their ability to be detected.

6. Success of the Alt-FEMP

The alt-FEMP was successfully executed as planned, including the screening and follow-up campaigns as well as the biannual controlled tank inspections. The one variation from the designed alt-FEMP was the delay of the screenings and subsequent follow-ups in 2023. The control region FEMP was also successfully completed in accordance with the Directive 060 default. Baytex exceeded the 30% follow-up requirement in both years of the alt-FEMP and repaired 96% of all detected fugitives by the time of this report.

7. Nonperforming Program Elements

While the approved alt-FEMP called for a Bridger screening in Q2 of 2023 and an ExACT screening in Q3 of 2023, the actual screenings were slightly delayed and performed in July (Q3) and October (Q4) 2023. This delay was influenced by the wildfires occurring in the summer of 2023. The wildfire activity also delayed the follow-up surveys following the Bridger screening leading to an average time between detection and follow-up of 51 days. Wildfire smoke did not interrupt the alt-FEMP activities in 2024 leading to an improved average time between detection and follow-up of 44 days.

8. Additional Control Measures

Any sites that were missed during screenings were automatically added to be followed-up on by OGI survey. Following acquisitions & divestitures during the alt-FEMP, Baytex adjusted the sites in the alt-FEMP and control regions to ensure the ratio of alt-FEMP to Control sites remained similar to what was originally approved.

9. Key Performance Indicators

- Baytex was successful in implementing alternative technologies to conduct LDAR screening, where emissions were detected at 150 of the 233 site screenings in 2024.
- In 2024, a total of 27,942 m³/day of methane was found to be emitting by screening technologies on 199 detections. Of which, 506 m³/day was identified as fugitive emissions when followed-up with OGI.
- On average, leak repairs were completed 44 days after an OGI follow-up under the alt-FEMP with 55% of repairs being completed in less than 30 days. The average time to leak repair was reduced considerably in 2024 (35 days) compared to 2023 (54 days).

- 96% of fugitive emissions sources were repaired under the alt-FEMP.
- See Table 4 for additional key performance indicators for both the alt-FEMP and control regions.

Appendix A: Raw Detailed Data

Please refer to the attached excel file of the raw data collected during the screening and follow-up surveys titled “Baytex AER Data Template.xlsx”.

Appendix B: Screening Data – Site-total Emissions by Campaign

May 2024 Bridger		
LSD	Emission Count	Emission Rate (kg/hr)
01-04-049-01W4	1	0.0
01-05-049-01W4	1	0.0
01-24-032-02W4	1	0.0
01-24-041-08W5	1	0.0
01-28-029-01W4	1	0.0
01-29-059-06W5	2	8.8
01-34-032-02W4	2	6.0
02-01-062-04W4	1	0.0
02-04-049-01W4	1	0.0
02-24-032-01W4	1	0.0
02-25-049-05W5	2	8.7
02-27-046-02W5	1	0.0
03-27-056-24W4	3	113.1
03-27-060-03W4	2	10.4
03-35-062-03W4	1	0.0
04-04-049-01W4	1	7.6
04-07-061-01W4	1	0.0
04-10-033-05W4	1	0.0
04-11-049-01W4	3	10.7
04-27-060-03W4	2	31.7
04-35-032-03W4	1	0.0
05-09-046-02W5	1	2.3
05-11-049-01W4	2	13.8
05-21-047-10W5	1	0.0
05-25-046-02W5	1	1.8
05-25-078-16W5	5	14.9
05-27-056-24W4	2	63.5
05-31-061-03W4	1	10.0
05-33-078-16W5	1	0.0
05-35-062-09W4	1	0.0
06-06-057-21W4	1	0.0

July 2024 ExACT		
LSD	Emission Count	Emission Rate (kg/hr)
01-04-049-01W4	1	0.1
01-05-049-01W4	1	0.5
01-07-033-01W4	2	1.4
01-24-032-02W4	1	0.3
01-24-041-08W5	1	0.1
01-28-029-01W4	1	1.6
01-29-059-06W5	2	1.8
01-34-032-02W4	1	1.0
02-01-062-04W4	1	0.4
02-04-049-01W4	1	0.0
02-24-032-01W4	1	1.4
02-25-049-05W5	2	3.8
02-27-046-02W5	2	0.0
03-27-056-24W4	1	3.6
03-27-060-03W4	1	1.0
03-35-062-03W4	1	0.1
04-04-049-01W4	1	0.5
04-07-061-01W4	2	5.3
04-10-033-05W4	1	0.2
04-11-049-01W4	1	4.3
04-27-060-03W4	1	1.9
04-35-032-03W4	1	0.0
05-09-046-02W5	1	1.7
05-11-049-01W4	1	7.1
05-21-047-10W5	1	0.8
05-25-046-02W5	1	1.7
05-25-078-16W5	1	3.3
05-27-056-24W4	1	1.3
05-31-061-03W4	1	0.7
05-33-078-16W5	2	1.4
05-35-062-09W4	1	0.0



LSD	Emission Count	Emission Rate (kg/hr)
06-07-062-03W4	1	8.6
06-28-048-08W5	1	0.0
06-32-056-24W4	1	0.0
06-33-057-24W4	1	0.0
07-05-062-03W4	1	1.6
07-06-057-23W4	1	0.0
07-10-056-24W4	3	67.4
07-20-061-03W4	1	0.0
07-24-040-06W5	1	8.1
07-28-045-02W5	1	0.0
07-33-032-01W4	1	0.0
08-05-049-01W4	1	0.0
08-16-049-04W5	1	0.0
08-16-062-03W4	1	15.9
08-35-078-16W5	4	4.9
08-36-056-25W4	1	2.1
09-18-032-01W4	1	0.0
09-18-044-10W5	1	0.0
09-23-078-16W5	4	6.8
09-25-061-04W4	1	5.1
09-29-078-16W5	1	1.9
09-34-062-09W4	1	0.0
10-11-062-04W4	1	0.0
10-14-048-08W5	1	0.0
10-19-044-10W5	2	13.4
10-24-058-12W5	1	0.0
10-29-040-01W5	1	0.0
10-29-056-24W4	3	7.0
10-30-056-21W4	1	1.7
10-30-058-24W4	1	0.0
10-31-048-08W5	2	0.0
10-31-056-24W4	1	0.0
10-32-043-02W5	1	0.0
10-35-062-09W4	1	3.8
11-18-062-04W4	1	0.0

LSD	Emission Count	Emission Rate (kg/hr)
06-06-057-21W4	1	2.9
06-07-062-03W4	1	3.7
06-07-062-08W4	1	0.4
06-28-048-08W5	2	0.9
06-32-056-24W4	1	0.4
06-33-057-24W4	1	0.0
07-05-062-03W4	1	0.5
07-06-057-23W4	1	0.0
07-10-056-24W4	2	10.0
07-20-061-03W4	2	0.8
07-24-040-06W5	1	1.8
07-28-045-02W5	1	2.3
07-33-032-01W4	1	0.3
08-05-049-01W4	1	0.1
08-16-049-04W5	1	1.8
08-16-062-03W4	1	3.8
08-35-078-16W5	1	1.9
08-36-056-25W4	1	0.9
09-18-032-01W4	1	3.1
09-18-044-10W5	1	0.0
09-23-078-16W5	1	6.1
09-25-061-04W4	1	0.4
09-29-078-16W5	1	0.8
09-34-062-09W4	1	0.4
10-11-062-04W4	1	0.0
10-14-048-08W5	1	0.6
10-19-044-10W5	1	0.0
10-24-058-12W5	1	0.2
10-29-040-01W5	1	0.9
10-29-056-24W4	2	2.4
10-30-056-21W4	1	0.0
10-30-058-24W4	1	0.4
10-31-048-08W5	2	0.4
10-31-056-24W4	1	2.4
10-32-043-02W5	1	1.8



LSD	Emission Count	Emission Rate (kg/hr)
11-24-041-08W5	1	1.9
11-24-049-10W5	1	7.6
11-24-056-24W4	1	0.0
11-26-032-02W4	1	0.0
11-30-044-02W5	1	0.0
11-32-056-23W4	1	0.0
11-35-062-09W4	1	0.0
12-02-033-02W4	1	6.3
12-04-039-03W5	1	0.0
12-05-062-08W4	1	0.0
12-10-049-01W4	1	13.6
12-11-056-24W4	1	0.0
12-14-044-27W4	1	0.0
12-21-057-22W4	1	7.5
12-31-061-03W4	1	0.0
12-32-062-04W4	1	0.0
12-35-062-09W4	2	8.4
13-17-063-03W4	1	0.0
13-19-032-02W4	1	0.0
13-25-049-10W5	1	0.0
13-29-032-01W4	1	0.0
13-30-061-03W4	1	0.0
13-31-061-03W4	1	15.9
13-34-040-06W5	1	3.1
13-34-062-09W4	1	0.0
13-36-059-03W4	3	16.6
14-02-079-16W5	1	3.7
14-11-049-01W4	2	11.8
14-19-058-11W5	1	0.0
14-22-062-03W4	1	0.0
14-25-061-04W4	1	0.0
14-35-062-09W4	1	0.0
15-05-062-03W4	1	11.6
15-23-032-03W4	1	9.4
15-26-041-08W5	2	0.7

LSD	Emission Count	Emission Rate (kg/hr)
10-35-062-09W4	1	0.4
11-18-062-04W4	1	0.4
11-24-041-08W5	1	0.2
11-24-049-10W5	1	0.0
11-24-056-24W4	1	0.4
11-26-032-02W4	1	0.2
11-30-044-02W5	1	3.4
11-32-056-23W4	1	0.0
11-35-062-09W4	1	1.2
12-02-033-02W4	1	2.8
12-04-039-03W5	1	0.7
12-05-062-08W4	1	0.0
12-10-049-01W4	1	1.9
12-11-056-24W4	1	0.0
12-14-044-27W4	1	0.2
12-21-057-22W4	1	2.7
12-31-061-03W4	1	0.1
12-32-062-04W4	1	0.2
12-35-062-09W4	2	3.7
13-17-063-03W4	1	0.0
13-19-032-02W4	2	0.6
13-25-049-10W5	1	0.1
13-29-032-01W4	1	2.1
13-30-061-03W4	1	1.1
13-31-061-03W4	1	4.4
13-34-040-06W5	1	0.2
13-34-062-09W4	1	0.0
13-36-059-03W4	1	3.5
14-02-079-16W5	2	0.8
14-11-049-01W4	1	5.2
14-19-058-11W5	1	0.2
14-22-062-03W4	1	0.0
14-25-061-04W4	1	1.1
14-35-062-09W4	1	0.0
15-02-033-02W4	3	5.1



LSD	Emission Count	Emission Rate (kg/hr)
15-27-062-09W4	1	0.0
15-28-062-09W4	2	0.0
15-30-057-22W4	1	0.0
16-05-049-01W4	1	0.0
16-14-078-16W5	5	19.5
16-15-048-08W5	1	0.0
16-17-063-03W4	1	0.0
16-24-041-08W5	1	0.0
16-26-062-09W4	1	0.0
16-28-062-09W4	1	0.0
16-33-048-01W4	1	0.0
16-34-048-09W5	1	0.0
16-34-059-03W4	4	23.6
16-34-062-09W4	1	3.9

LSD	Emission Count	Emission Rate (kg/hr)
15-05-062-03W4	1	6.6
15-23-032-03W4	1	3.6
15-26-041-08W5	1	2.0
15-27-062-09W4	1	0.4
15-28-062-09W4	2	1.5
15-30-057-22W4	1	0.3
16-05-049-01W4	1	1.2
16-14-078-16W5	1	1.4
16-15-048-08W5	1	0.2
16-17-063-03W4	1	0.3
16-24-041-08W5	1	0.2
16-26-062-09W4	1	1.3
16-28-062-09W4	1	2.1
16-33-048-01W4	1	1.9
16-34-048-09W5	1	0.0
16-34-059-03W4	1	0.1
16-34-062-09W4	1	7.2

Appendix C: Screening Data – Individual Emissions

Please refer to the attached excel file titled “Appendix_C.xlsx”.