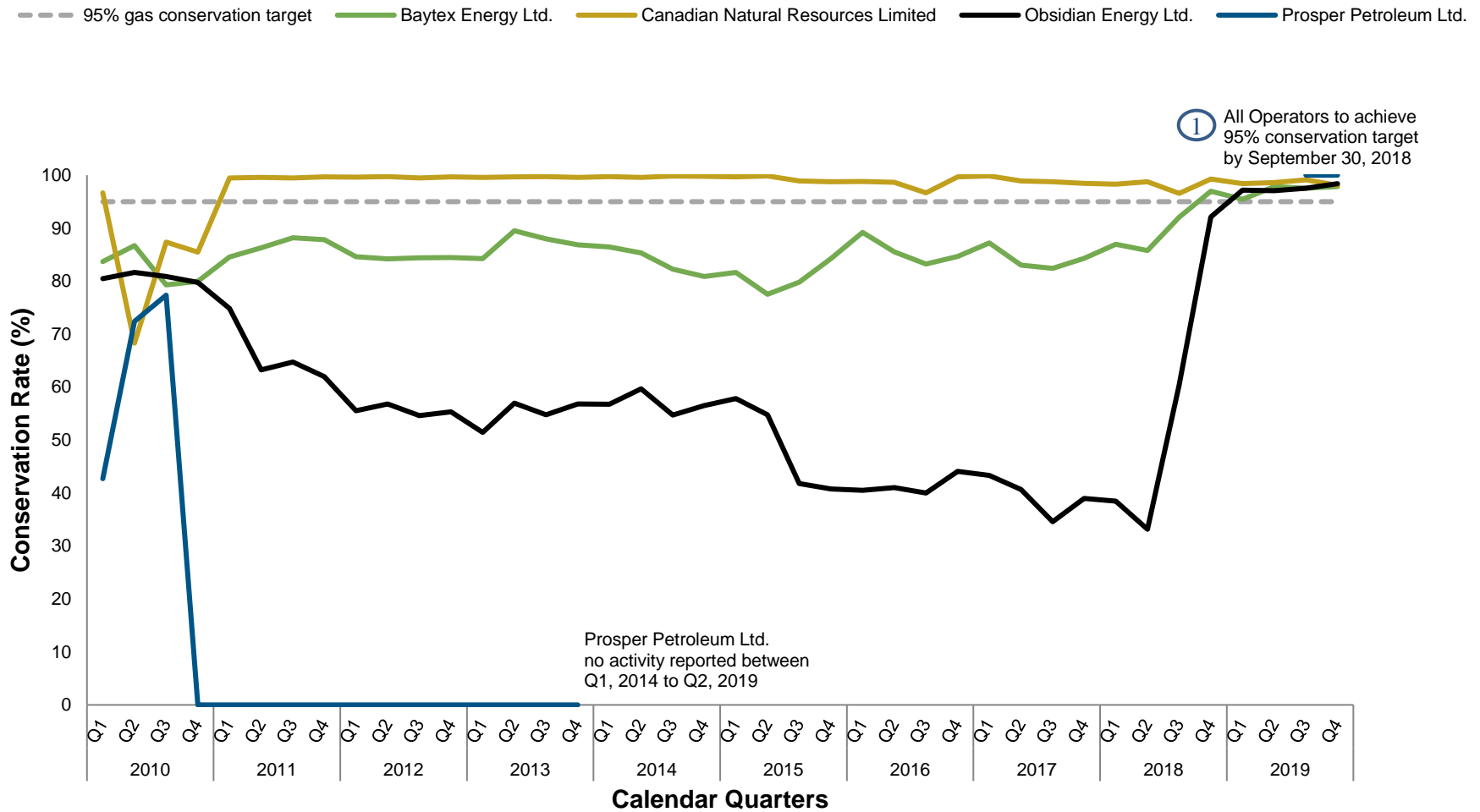


Figure 13 – Gas Conservation Rate of Heavy Oil and Bitumen Operators in the Peace River Area



Values are calculated based on data reported by operators to Petrinex. Data provided includes all oil and bitumen batteries. Conservation requirements identified above apply to heavy oil and bitumen operations at this time. Flare data obtained from Petrinex includes both routine and nonroutine flaring volumes. Gas conservation rate requirements proposed for the Peace River area may allow for nonroutine flaring volumes to be excluded from the gas conservation calculation.

Gas Conservation Calculation: $\frac{(\text{Total Gas Produced} - \text{Flared} - \text{Vented})}{\text{Total Gas Produced}} \times 100\%$

Data extracted from Petrinex in March 2020. Chart published in April 2020. See disclaimer provided on outcome page

